

TUMAINI.

Warumi 5:5.

Sylvester C.Omallah.

April 2021

Kinyerezi DSM.

Maestoso

Musical notation for the first system, featuring a treble and bass clef with a key signature of three sharps (F#, C#, G#) and a 2/4 time signature. The melody is written in the treble clef, and the accompaniment is in the bass clef. The lyrics are: Tu-ma-i - ni ha li-ta-ha-ya-ri-shwi, kwa ma-a-na pe ndo la Mu-ngu

5

Musical notation for the second system, starting at measure 5. The melody continues in the treble clef, and the accompaniment is in the bass clef. The lyrics are: li me-kwi-sha kwi-sha ku-mi mi - nwa, Ka - ti-ka mi - o-yo ye tu

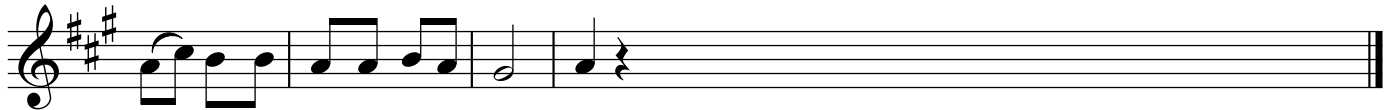
9

Musical notation for the third system, starting at measure 9. The melody continues in the treble clef, and the accompaniment is in the bass clef. The lyrics are: na Ro-ho M - ta ka-ti fu, tu-li-ye - pe-wa si si a-le-lu - ya.

15

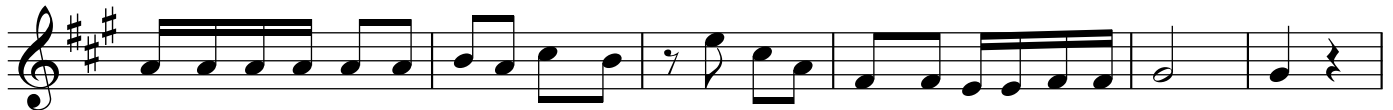
Musical notation for the fourth system, starting at measure 15. The melody continues in the treble clef, and the accompaniment is in the bass clef. The lyrics are: 1. Wa - i-pe-le-ka ro ho ya-ko, ee Bwa-na na-we wa-u fa-nya u - pya,

21



u - so wa n - chi a - le - lu - ya.

25



2. U - tu - ku - fu wa - ke na u - du - mu, mi - le - le Bwa - na a - ya - fu - ra - hi - e,

31



ma - te - ndo ya - ko si - ku zo - te.

35



3. A - tu - ku - zwe Ba - ba, na - ye Mwa - na, na Ro - ho M - ta - ka - ti - fu M - fa -

39



ri - ji, Ka - ma mwa - nzo na sa - sa na si - ku zo - te.