

TUNALETA VIPAJI VYETU

VIPAJI

Simon F Kabanda
Ulongoni Parish DSM

6/16

po ke - a

Ba ba tu na le ta vi pa ji_ vye tu Ba ba tu na le ta vi pa ji_

Detailed description: This system contains the first six measures of the piece. The music is in G major (one sharp) and 6/16 time. The vocal line starts with a whole rest in the first two measures, then enters in the third measure with the lyrics 'po ke - a'. The piano accompaniment features a rhythmic pattern of eighth and sixteenth notes in the right hand and chords in the left hand.

8

po ke - a tu na le ta vi pa ji_ vi pa ji vye tu_ Ba ba po ke_ a tu na le ta vi pa ji_ vi pa ji vye

we

hi_

Detailed description: This system contains measures 7 through 14. It begins with a repeat sign. The vocal line continues with the lyrics 'tu na le ta vi pa ji_ vi pa ji vye tu_ Ba ba po ke_ a tu na le ta vi pa ji_ vi pa ji vye'. There is a melisma 'we' under the word 'tu_'. The piano accompaniment continues with the established rhythmic pattern.

15

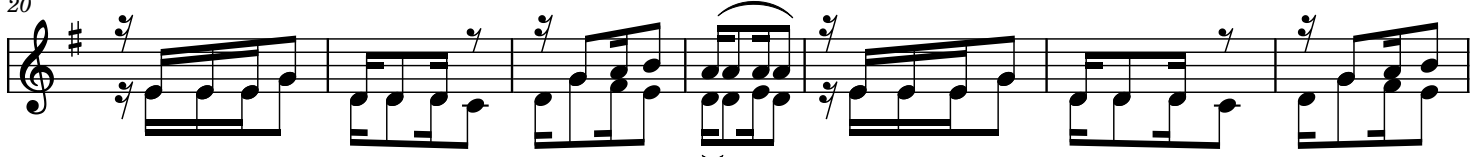
1. 2.

tu twa o mba Ba ba u po ke e tu na le ta ba u po ke e_

Detailed description: This system contains measures 15 through 18. It features a first and second ending. The vocal line has the lyrics 'tu twa o mba Ba ba u po ke e tu na le ta ba u po ke e_'. The piano accompaniment concludes with a final cadence.

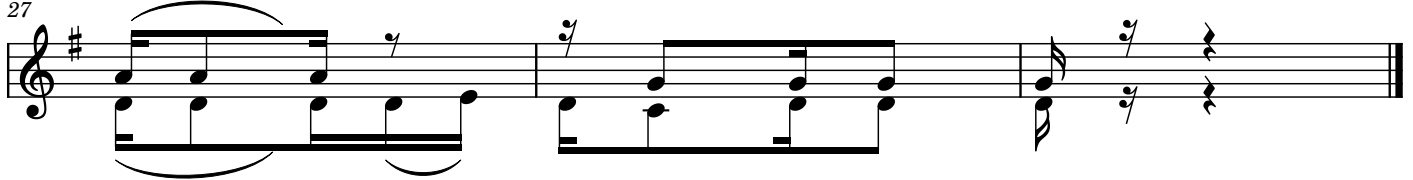
usiweke ala wala pumziko baada ya shairi weka ala baada ya kiitikio tu.

20



1;M ka te na di va i Ba ba tu na le ta___ ni ma za o ya sha mba Ba ba tu na le
 2;Fe dha za mi fu ko ni Ba ba tu na le ta___ ni ka zi ya mi ko no ye tu wa na da
 3;Pi a na na fsi ze tu Ba ba tu na le ta___ twa o mba u zi ta ka se ba ba zi ba

27



ta_ ba_ ba po ke a_____
 mu___ ba___ ba po ke a_____
 ri ki_ ba___ ba twa o mba_____