

KWA IMANI TUNENE

E.M.Kaniki
Kilimanjaro TZ

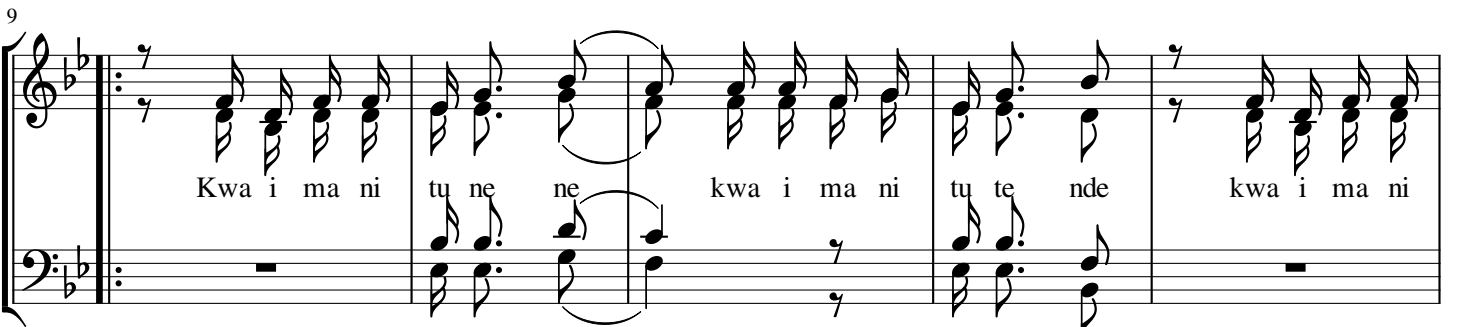
Stanzas



1. Bi bi li a ya tu e le za tu i shi kwa i ma ni
I ma ni ya ma te ndo ndi yo Kri sto a lo tu a chi
2. Kwa i ma ni tu e ne ze ne no la Mu ngu du ni a
Tu e ne ze ne no la Mu ngu we tu bi la ku ho
3. Tu e ne ze i ma ni ye tu ka ma ma Ma ri a
Tu o nye she i ma ni ye tu ka ma vi le Yu su



ka ma vi le ba ba ye tu wa i ma ni I bra hi mu
a tu si we na wa si wa si ka ma Pe tro na To ma so
ni wa tu wo te wa pa te ku m ta mbu a Mu ngu we tu
fu tu e ne ze i ma ni ye tu wa tu wa mju e Mu ngu
a i li tu i ti ki e wi to wa Mu ngu a tu i ta po
fu tu a mi ni Mu ngu a we za ku te nda mi u ji za



Kwa i ma ni tu ne ne kwa i ma ni tu te nde kwa i ma ni
tu ne ne tu te nde



tu o mbe kwa i ma ni tu sa li kwa i ma ni si si tu ta te mbe
tu o mbe tu sa li si si te mbe

The image shows a musical score for two voices, likely soprano and alto, in a key with one flat (B-flat). The score is divided into two systems, labeled '1.' and '2.'. The lyrics are: 'a ju u ya u so wa ma ji so wa ma ji'. The first system covers the first two phrases, and the second system covers the second two phrases. The music features a mix of eighth and sixteenth notes, with some rests. The lyrics are written below the notes, with some words split across lines.