

HERI TAIFA

BY Joseph j Kanyerere.

25/05/2021

SHIMBI.

$\text{♩} = 75$

He ri he ri ta i fa a mba lo bwa na ni mu ngu wa o a
mu ngu wa o a -
Ambalo bwa nani mu ngu wa o -

Detailed description: This is the first system of a musical score for 'Heri Taifa'. It features a piano accompaniment with a treble and bass clef. The key signature has three sharps (F#, C#, G#) and the time signature is 2/4. The tempo is marked as quarter note = 75. The lyrics are written below the notes, with some words split across lines. The system ends with a double bar line.

10

1. mba lo bwa na ni mu ngu wa o a wa
2. mba lo - bwa na ni mu ngu wa - o
a mba lo - bwa na

Detailed description: This is the second system of the musical score. It continues the piano accompaniment and includes two first endings. The first ending leads back to the beginning of the system, and the second ending concludes the system. The lyrics are aligned with the notes.

15

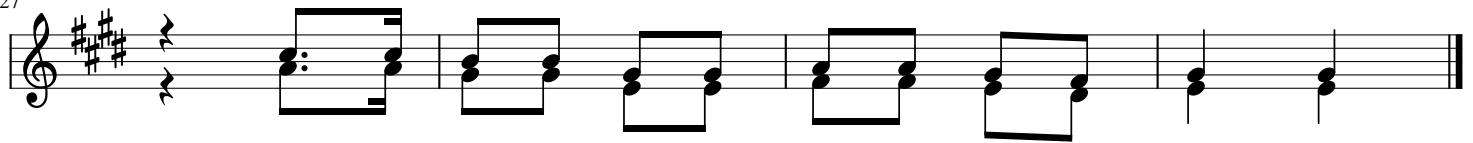
1.Kwa ku wa ne no la bwa na ni a - di li na ka zi ya ke
2.Kwa ne no la bwa na mbi gu zi li fa nyi ka na je shi la ke
3.Ta za ma ji cho la bwa na li kwa wa mcha o wa zi ngo je a
4.Na fsi - ze tu zi na mgo ja bwa - na ye ye ndi ye msa

Detailed description: This is the third system of the musical score. It features a single melodic line in the treble clef. The lyrics are written below the notes, with four numbered lines of text.

21

1.yo te hu i te nda kwa u a mi ni fu bwa na hu zi pe nda ha ki na hu ku - mu
2.lo te kwa pu m nzi ya - ki nywacha ke ma a na ye ye a li se ma i ka - wa
3.o - fa - = - dhi - li - za ke ye ye hu wa po nya na fsi za o nama u ti
4.a da we - tu - na - nga o ye tu Ee bwa na fa dhi li za ko zi ka e na si

Detailed description: This is the fourth system of the musical score. It features a single melodic line in the treble clef. The lyrics are written below the notes, with four numbered lines of text.



1.n	chi	i	me	ja	a	fa	dhi	li	za	bwa	na
2.na	ye	ye	ali	a	mu	ru	i	ka	si	ma	ma
3.na	ku	wa	hu	i	sha	wa	ka	ti	wa	nja	a.
4.ka	ma	vi	le	tu	li	vyo	ku	ngo	ja	we	we.