

# HERI TAIFA

BY Joseph j Kanyerere.

25/05/2021

SHIMBI.

$\text{♩} = 70$

He ri he ri ta i - fa a mba lo Bwa na ni Mu ngu wa o a  
Mu ngu wa o a -

Ambalo Bwanani Mu ngu wa o a

Detailed description: This is the first system of a musical score for 'Heri Taifa'. It features a piano accompaniment with a treble and bass clef. The key signature has three sharps (F#, C#, G#) and the time signature is 2/4. The tempo is marked as quarter note = 70. The melody is written in the treble clef, and the lyrics are placed below the notes. The system ends with a double bar line and repeat signs.

10

mba lo Mwa na ni Mu ngu wa - o a wa  
mba lo - - Bwa na

1. 2.

mba lo - - Mwa na

Detailed description: This is the second system of the musical score. It continues the piano accompaniment and melody. The lyrics are split across two lines. There are two first endings, labeled '1.' and '2.', which lead to different conclusions for the phrase. The system ends with a double bar line and repeat signs.

15

1. Kwa ku wa ne no la Bwa na ni a - di li na ka zi ya ke  
2. Kwa ne no la Bwa na mbi gu zi li fa nyi ka na je shi la ke  
3. Ta za ma ji cho la Bwa na li kwa wa mcha o wa zi ngo je a  
4. Na fsi - ze tu zi na mgo ja Bwa - na ye ye ndi ye msa

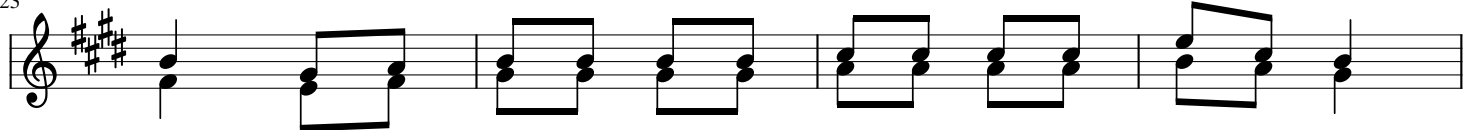
Detailed description: This is the third system of the musical score. It features a piano accompaniment with a treble clef. The melody is written in the treble clef. There are four different vocal lines, numbered 1 through 4, each with its own set of lyrics. The system ends with a double bar line and repeat signs.

21

1. yo te hu i te nda kwa u a mi ni  
2. lo te kwa pu m nzi ya - ki nywa cha  
3. o - fa - - - dhi - li - za  
4. a da we - tu - na - nga o ye

Detailed description: This is the fourth system of the musical score. It features a piano accompaniment with a treble clef. The melody is written in the treble clef. There are four different vocal lines, numbered 1 through 4, each with its own set of lyrics. The system ends with a double bar line and repeat signs.

23



1.fu Bwa na hu zi pe nda ha ki na hu ku - mu  
 2.ke ma a na ye ye a li se ma i ka - wa  
 3.ke ye ye hu wa po nya na fsi za o nama u ti  
 4.tu Ee Bwa na fa dhi li za ko zi ka e na si

27

1.n chi i me ja a fa dhi li za Bwa na  
 2.na ye ye ali a mu ru i ka si ma ma  
 3.na ku wa hu i sha wa ka ti wa nja a.  
 4.ka ma vi le tu li vyo ku ngo ja we we.