

## WAUFUMBUA MKONO WAKO

(K) Zab. 145:16

Dr. Basil B. Tumaini (+255 767 847 258)

Wimbo wa katikati: Jumapili ya 17 B na 18 A

2007

Manzese, Dar es Salaam

Wa - u - fu - mbu - a m - ko - no wa - ko, wa - ki - shi - bi - sha

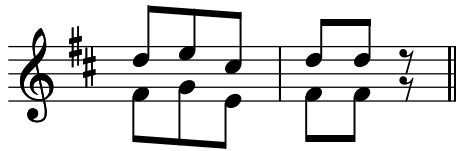
ki - la ki - li - cho ha - i ki - la ki - li - cho ha - i ma - ta - kwa ya - ke.  
ki - li - cho ha - i

### Mashairi: Zab. 145:10,11,15,17.

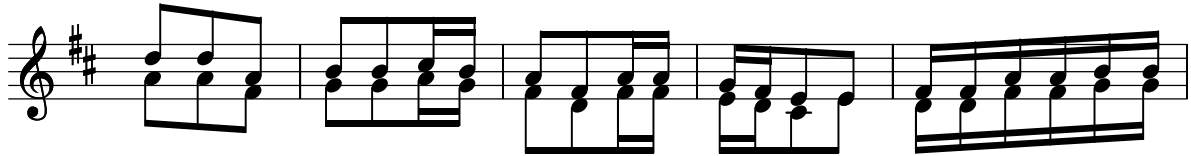
1. Ee Bwa-na, ka - zi za - ko zo - te zi - ta - ku - shu - ku - ru na - o wa - cha -

mu - ngu wa - ko wa - ta - ku - hi - mi - di.

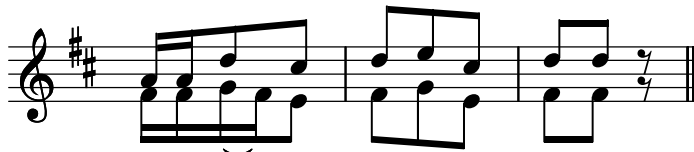
2. Wa - ta - u - ne - na u - tu - ku - fu wa u - fa - lme wa - ko, na - ku - u - ha - di - thi - a



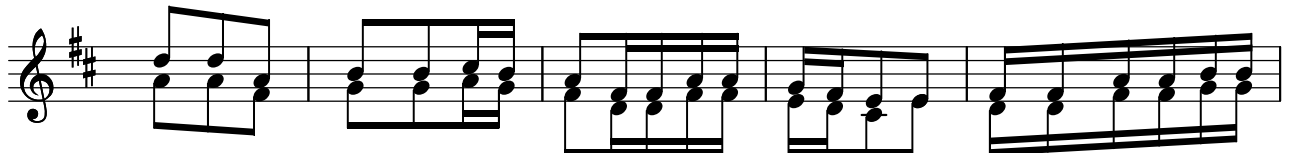
u-we-za wa-ko.



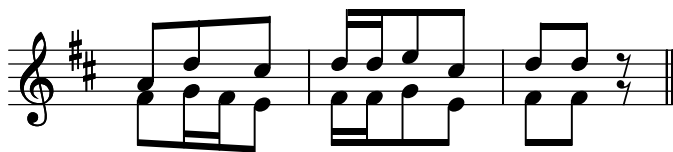
3. Macho ya wa-tu wote ya-ku-e-le - ke-a we-we na-we hu-wa-pa cha -



ku-la cha - o wa-ka-ti wa-ke.



4. Bwa-na ni mwe-nye ha-ki ka-ti-ka nji-a za-ke zo-te na mwe-nye fa-dhi-li



ju - u ya ka-zi za-ke zo-te.