

OMBENI NANYI MTAPEWA

Na, KASIMILI S. RUZINO

Mathayo 7:7-8

O mbe ni Tafu te ni

mf

O mbe ni o mbe ni na nyi m ta pe wa Ta fu te ni

This system contains the first two lines of the musical score. The top staff is in treble clef with a key signature of one sharp (F#) and a 2/4 time signature. The bottom staff is in bass clef with the same key signature and time signature. The music begins with a rest in the first measure, followed by a melodic line in the treble and a supporting bass line. The lyrics are written below the notes.

Bi she ni m

f

1. 2.

na nyi m ta pa ta Bi she ni m la ngo na nyi m ta fu ngu li wa li wa kwama

This system contains the third and fourth lines of the musical score. It features a dynamic marking of *f* (forte). The melody continues with a slight increase in volume. The second line includes first and second endings, marked with '1.' and '2.' above the notes.

a na ki la a o mba ye hu pe wa na a ta fu ta ye hu pa ta na ye

This system contains the fifth and sixth lines of the musical score. The melody and bass line continue with a consistent rhythmic pattern. The lyrics are aligned with the notes.

1. 2.

a bi sha ye m la ngo a ta fu ngu li wa kwama wa

This system contains the seventh and eighth lines of the musical score. It concludes with first and second endings, marked with '1.' and '2.' above the notes. The piece ends with a final chord in the bass line.

Mathayo 7;9-10



1.Ni_ yu pi kwe. nu a mbye mwana we a ki mwombam ka te a ta m pa ji we? a u a ki



mwo mba sa ma ki a ta m pa nyo ka ba da la ya sa ma ki

Mathayo 7;11



2.Basi i kiwani nyi mli owao vu m na ju aku wa pawato to we nuvipa wa vyema, je!siza i di

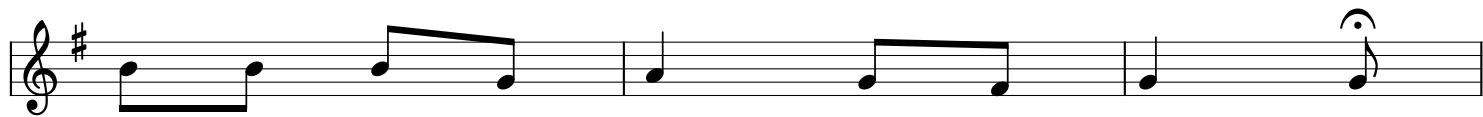


ba ba ye nu wa mbi ngu ni a ta wa pa me ma wa o wa mwo mba o

Yohane 14;13-14



3.Nanyi m ki omba lo lote kwa ji na la ngu ni_ ta_ fanya m kini omba cho cho tekwa ji na



la ngu ni ta wa fa nyi e ni

Yohane 16;23-24



4.Cho. cho te m ta ka cho mwomba ba bakwa ji na la ngu a_ ta wa peni o mbeni na nyi



m ta pa ta i li fu ra ha ye nu i we ti mi li fu