

AMELANIWA MTU YULE.

Yer. 17;1-20

Na, Jiwe Ponera's
Moshi- 28-3-08"

Uchangamfu,,

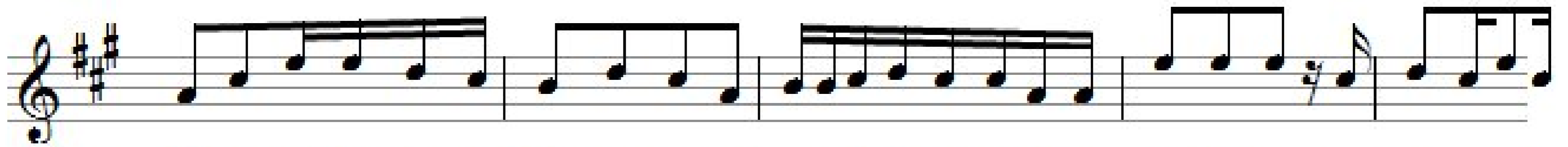
Bwa-na - a-se-ma hi vi A-me-la - a-ni-wa-m-tu yu - le a - m - te-ge

me-a-ye-mwa-na da-mu a-m-fa-nya-ye-mwa-na - da-mu-ku wa-ki-nga ya ke,

Mo-yo-ni a-me mwa-cha-Mu-ngu a-ta-ku-wa-fu-ka-ra nyi-ka-ni na-ye-a-ta

ku-wa-ja ngwa ni pa li-po - u-ka me.

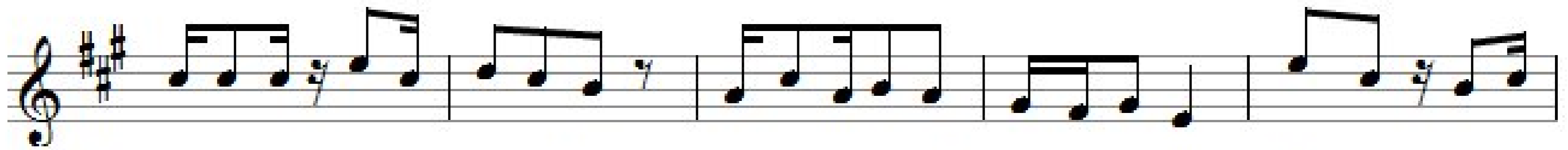
0784-919673



1. Mi-mi-ndi-mi-bwa-na Mu-ngu-wa-ko u-si-a-bu-du-mi-u-ngu we-ngi-ne u - me-ge-u-ki



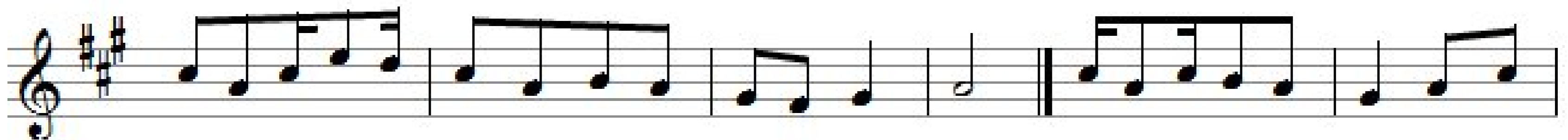
a-kwa - Mi - u-ngu-mi-ngi - ne.



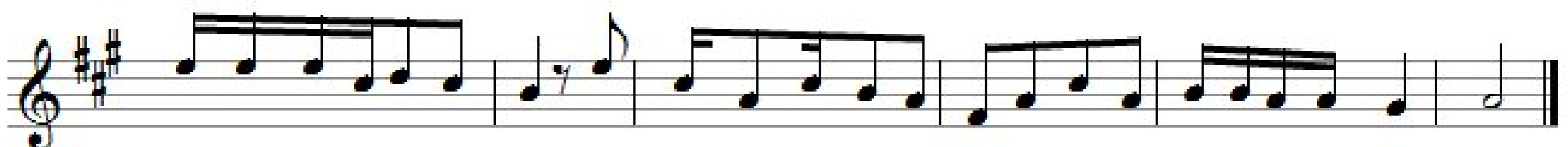
2. I-ma-ni i-me - to-we-ka na-ma-u-a - ji ya-me-zi-di Mu-ngu tu-me



mwa-cha-tu me-po-te-a-nji - a 3. Ma-go-njwa-ni - me-ngi ya-si - yo-ti-bi ka



vi-ta-vi-me-zi - di-Bwa-na-twa - a-nga-mi - a 4. I-ma-ni-po-to fu-kwa-wa



ga-nga-wa-ki-e-nye - ji U - chu-wa-ma-da-ra - ka-tu-me-m ka-si-ri-sha-Mu ngu.