

MIISHO YOTE YA DUNIA

Zaburi - Sikukuu ya Noeli - Mchana

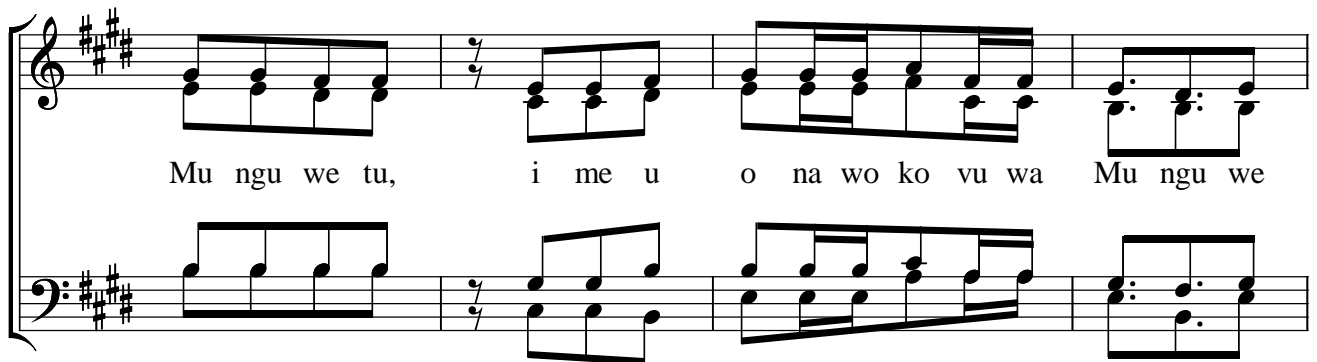
Na; Paul San. Mziba

Masurura - Butiama - Mara

15/12/2021



Mi i sho yo te yo te ya Du ni a, i me u o na wo ko vu wa



Mu ngu we tu, i me u o na wo ko vu wa Mu ngu we

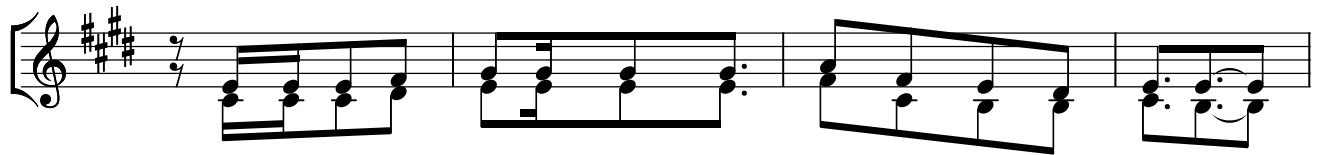


1. tu Mi i sho, 2. tu.

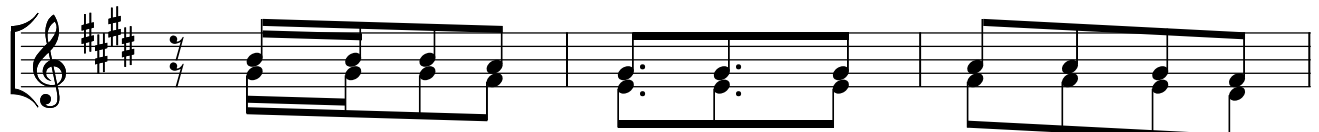
Maimbilizi



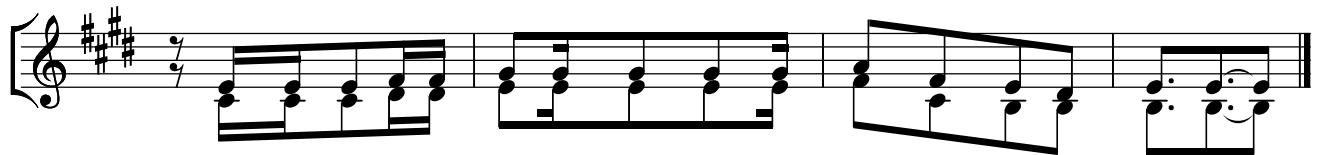
1. Mwi mbi e ni Bwa na Bwa na wi mbo m pya,
2. Bwa na ame ufu nu a wo - ko vu wa ke,
4. Msha ngi li eni Bwa na Bwa na N chi yo te,
3. Mi i sho yo te yo te ya du ni a,



kwa ma a na a me te nda ma mbo ya a ja bu -
ma cho ni pa ma ta i fa ame dhihi risha haki ya ke -
i nu eni sau tii mbe nikwa furaha i mbe ni za bu ri -
i me u o na wo ko vu wa Mu ngu we tu -



Mko no wa ku u me wa ke mwe nye we,
A me zi ku mbu ka re he ma za ke,
Mwi mbi e ni Bwa naza buri kwa ki nu bi,
Msha ngi li eni Bwa na Bwana n chi yo te,



Mko no wa ke M ta ka ti fu u me te nda wo ko vu -
na u a mi - ni fu wa ke kwa nyu mbaya I sra e li -
na kwa sau ti ya Ba ra gu mu msha ngi li e ni Mfa lme -
I nu eni sa u tii mbe nikwa fura ha i mbe ni za bu ri -