

# ALELUYA TUSHANGILIE

E. J. Magulyati  
Geita Cathedral

*Moderato*

A le lu ya tu sha ngi li e Bwa na ka za li - wa tu me pe wa

Musical notation for the first system, featuring a treble and bass clef with a key signature of three sharps (F#, C#, G#) and a 2/4 time signature. The melody is written in the treble clef, and the accompaniment is in the bass clef. The lyrics are placed below the notes.

Mwana u me wa ki fa lme  
Mtoto Mwana u me na u we za u we za wa ki fa lme u ta ku wa ma be ga ni  
na u we za wa ki fa lme

Musical notation for the second system, continuing the melody and accompaniment from the first system. The lyrics are placed below the notes.

mwa - ke be ga ni mwa ke na ye a ta i twa msha u ri wa - a

Musical notation for the third system, continuing the melody and accompaniment. The lyrics are placed below the notes.

ja - bu Mu ngumwe nye ngu - vu m fa lme wa a ma ni

Musical notation for the fourth system, concluding the piece. The lyrics are placed below the notes.



1. Ni fu ra ha le o ka ti ka m ji wa Da u di mwanga le o u me tung'a ri a



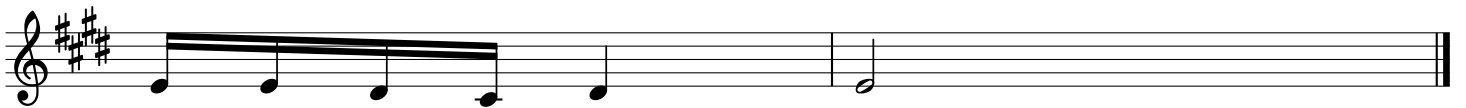
Mwoko zi a meza li wa twe nde ni tu kamwone a meza li wa



2. Fu ra hi ni e nyi wa tu wo te sha ngi li e ni i mbe ni kwasha ngwe



Bwa na a me za li wa kwa a ji li ye - nu Wo ko vu u meshuka



kwa a ji li ye nu



3. Tu me i o na nyo taya ke masha ri ki na si twende ku m su ju di a



Mwoko zi a meza li wa twe nde ni tu kamwone a meza li wa