

TUTAIMBA WIMBO MPYA

Elia Temihanga Makendi

Kihorogota-Isimani

18/08/2021

♩ = 74

S
A

T
B

Tu ta i mba wi - mbo m pya mbe le ya ki ti ki ti cha e nzi so te

Detailed description: This system contains the first four measures of the song. It features a Soprano (S) and Alto (A) vocal line on a treble clef staff and a Tenor (T) and Bass (B) vocal line on a bass clef staff. The music is in 2/4 time with a key signature of one sharp (F#). The lyrics are: 'Tu ta i mba wi - mbo m pya mbe le ya ki ti ki ti cha e nzi so te'.

5

tu ta i mba

tu ta i mba tu ki zu ngu ka ki ti ki ti ki le cha - e nzi kwe li tu ta i mba

Detailed description: This system contains measures 5 through 8. The lyrics are: 'tu ta i mba tu ta i mba tu ki zu ngu ka ki ti ki ti ki le cha - e nzi kwe li tu ta i mba'. The musical notation continues with the same instrumental accompaniment.

10

bi la ku cho ka tu ta i mba kwa sha ngwe tu ta i mba kwa sha ngwe

Detailed description: This system contains measures 9 through 12. The lyrics are: 'bi la ku cho ka tu ta i mba kwa sha ngwe tu ta i mba kwa sha ngwe'. The musical notation continues with the same instrumental accompaniment.

13

tu ta i mba

tu ta i mba kwa sha ngwe tu ta i mba na Ma la i ka

Detailed description: This system contains measures 13 through 16. The lyrics are: 'tu ta i mba tu ta i mba kwa sha ngwe tu ta i mba na Ma la i ka'. The musical notation concludes with a double bar line and repeat dots.

17



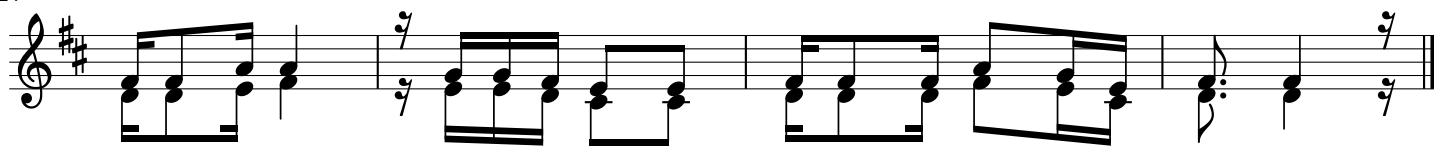
1. I li tu we ze fi ka mbi ngu ni ni la zi ma tu i shi
 2. I na tu pa sa ku a cha dha mbi i li tu we ze ku shi
 3. Mbe le ya ki ti ki ti cha e nzi mbi ngu ni kwe nye ra ha

20



kwa ku mpe nde za Mu ngu we tu kwa ku zi shi ka a mri za - ke
 ri ki shwa u tu ku fu wa ke tu ki u nga na na wa ta ka ti
 ra ha ya kwe li tu ki fi ka tu ta zi i mba si fa za Bwa na

24



ha po ndi po tu ta ja i mba mbe le ya ki ti cha e nzi.
 fu we ngi ne tu ki - i mba si fa za ke Mu ngu we tu.
 m ta wa la wa vi tu vyo te Mu ngu we tu mwenye ngu vu.