

YESU UNIHURUMIE

Kwaresma

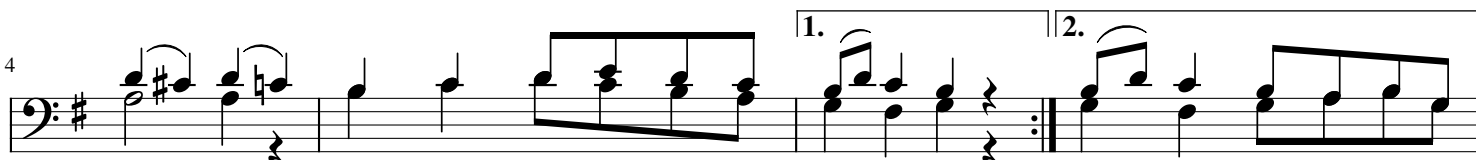
by, JONTA P.I
Kanisa Kuu Singida,
17 feb 2020.
copied by Muro.

Taratibu

$\text{♩} = 63$



1.(a)Ye su u na hu ku mi____wa, bi la ha ti a yo
(b)Dha mbi za ngu ndi yo sa ba__bu ya ku pi gwa kwa ko
2.(a)Ma te u so ni wa te me__wa mwi li wa ja a ma
(b)mo yo wa ko u me u mi - a kwa ma ko sa ya ngu
3.(a)Ngu o za ko wa me ku vu - a wa me ku a cha m
(b)Wa la zwa m sa la ba____ni mi gu u na yo mi
4.(a)Mwi sho u na o na ki____u wa si ku pe ha ta
(b)u ka li a kwa u chu____ngu Ba ba ya ngu wa sa



yo te i li ku ni ko mbo a mi mi
we we na ku dhi ha ki wa na wa tu mwo ko zi
do nda u na pi gwa bi la hu ru ma
mi mi u ni sa me he Ye su wa ngu mwo ko zi
tu pu u me ko sa ni ni Ee Ye su
ko no vi na fu ngwa kwa mi su ma ri mwo ko zi
ma ji wa na ku pa ti a si - ki,
me he ha wa ju i wa li te nda lo mwo ko zi



Ye____su u ni hu ru mi e Ye su ku - te - swa ma te so ma ka li sa na

The image shows a musical score for two staves. The top staff is in treble clef and the bottom staff is in bass clef. Both staves have a key signature of one sharp (F#). The music consists of two systems. The first system has two measures, each with a first ending bracket labeled '1.' and a second ending bracket labeled '2.'. The lyrics are: 'kwa a ji - li ya dha mbi za - ngu za - ngu'. The second system also has two measures, with the first measure containing the lyrics '(mwo ko zi)' and the second measure containing '(mwo ko zi) za ngu'. The music features various rhythmic patterns, including eighth and sixteenth notes, and rests.