

WAHUBIRINI MATAIFA

Wimbo wa Katikati
(Zab. 95: 1-3, 7-10)

Anga Anselim

10, January, 2022

Kibosho Senior Seminary

Moderato

Soprano
Alto

Tenor
Bass

Wa hu bi ri ni, wa hu bi ri ni ma ta i fa ha ba ri za

Detailed description: This block contains the first system of music. It features a Soprano/Alto part on a treble clef staff and a Tenor/Bass part on a bass clef staff. The key signature is two sharps (F# and C#), and the time signature is 3/8. The tempo is marked 'Moderato'. The lyrics 'Wa hu bi ri ni, wa hu bi ri ni ma ta i fa ha ba ri za' are written below the vocal lines.

1. 2.

u tu ku fu wa ke. wa ke. wa hu bi ri ni wa hu bi ri ni,

Wa hu bi ri ni wa hu bi ri ni wa

Detailed description: This block contains the second system of music. It features a Soprano/Alto part on a treble clef staff and a Tenor/Bass part on a bass clef staff. The key signature is two sharps (F# and C#), and the time signature is 3/8. The tempo is marked 'Moderato'. The lyrics 'u tu ku fu wa ke. wa ke. wa hu bi ri ni wa hu bi ri ni,' are written below the vocal lines. There are first and second endings indicated by '1.' and '2.' above the staff.

14

wa hu bi ri ni, wa hu bi ri ni ma ta i fa ha ba ri za

hu bi ri ni, Wa hu bi

Detailed description: This block contains the third system of music. It features a Soprano/Alto part on a treble clef staff and a Tenor/Bass part on a bass clef staff. The key signature is two sharps (F# and C#), and the time signature is 3/8. The tempo is marked 'Moderato'. The lyrics 'wa hu bi ri ni, wa hu bi ri ni ma ta i fa ha ba ri za' and 'hu bi ri ni, Wa hu bi' are written below the vocal lines.

19

1. 2.

u tu ku fu wa ke. Wa wa ke.

Detailed description: This block contains the fourth system of music. It features a Soprano/Alto part on a treble clef staff and a Tenor/Bass part on a bass clef staff. The key signature is two sharps (F# and C#), and the time signature is 3/8. The tempo is marked 'Moderato'. The lyrics 'u tu ku fu wa ke. Wa wa ke.' are written below the vocal lines. There are first and second endings indicated by '1.' and '2.' above the staff.



1.Mwimbi e ni Bwa na wimbo m pya mwimbi e ni Bwa na n chi yo te



mwimbi e ni Bwa na li ba ri ki ni ji na la ke.



2.Ta nga ze ni wo ko vu wa ke si ku kwa si ku



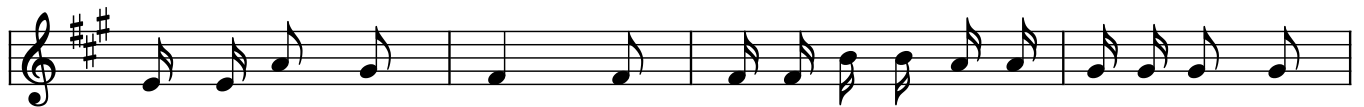
wa hu bi ri ni ma ta i fa ha ba ri za u tu ku fu wa ke.



3.M pe ni Bwa na M pe ni Bwa na e nyi



ja ma a za wa tu m pe ni Bwa na u tu ku fu na ngu vu.



4.Mwa bu du ni Bwa na kwa u zu ri wa u ta ka ti fu



te te me ke ni mbe le za ke n chi yo te.