

# ENYI MMTAFUTAO MUNGU.

Prepared by,

Jonta P.I

Zab.68:13,16,29-30,32-33,35-36,(k)32

Wimbo wa katikati Jp. ya 15 ya Mwaka C.

Singida Cathedral

4th July 2019.

*Moderato!*

♩ = 60

S/A

*mf* Ee\_\_\_ nyi m m ta fu ta o Mu ngu Ee nyi M m ta fu ta o Mu

T/B

8

Mi o yo ye nu ye nu

*mf* ngu Mi o yo ye nu ye\_\_\_ nu i hu i\_\_\_ shwe. *mp* Mi\_\_\_ o yo ye\_\_\_ nu

15

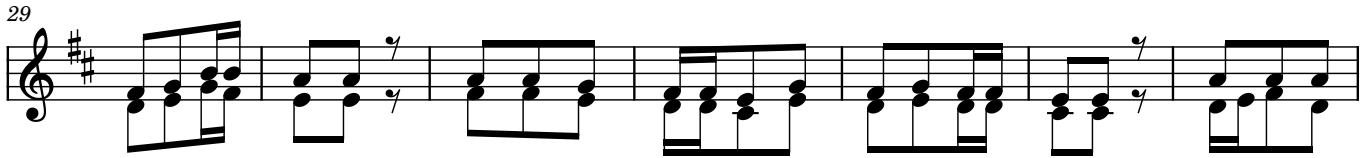
Mi o yo ye\_\_\_ nu ye nu

*mf* mi\_\_\_ o yo ye\_\_\_ nu *f* Mi o yo i hu i shwe *ff* mi\_\_\_ o yo ye nu i hu i\_\_\_ shwe.

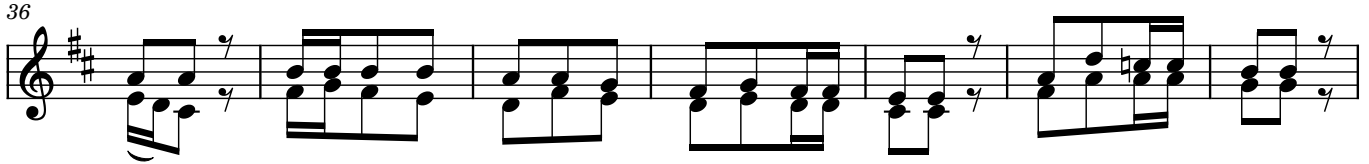
*Maimbilizi!*

23

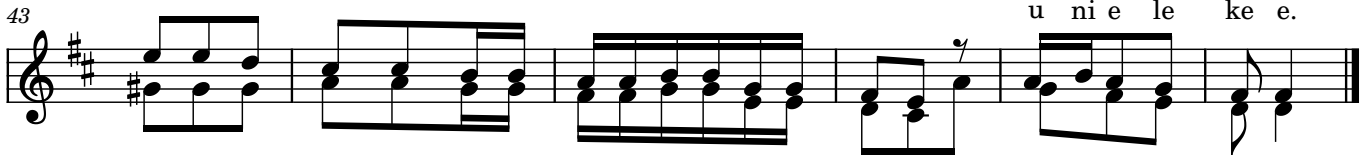
1.Na mi ma o mbi ya ngu na ku o mba we we Bwa na wa ka ti u ku pe nde



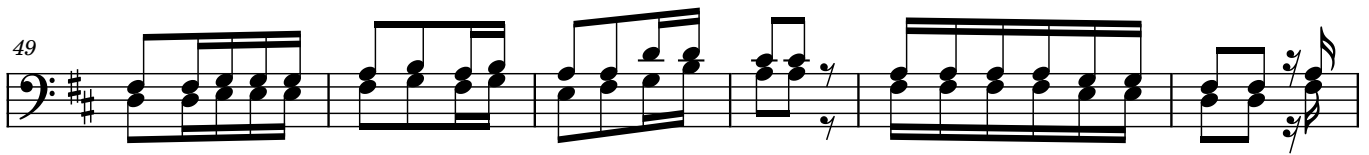
za o Ee Mungu kwa wi ngi wa fa dhi li za ko u ni ji bu ka— ti ka



kwe— li ya wo ko vu wa ko Ee Bwa na u ni ji bu ma a na fa dhi li



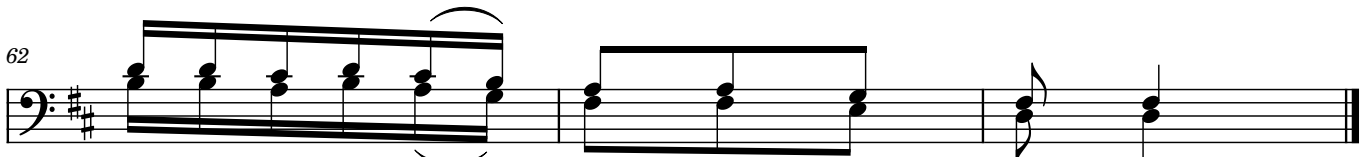
u ni e le ke e.  
za ko ni nje ma kwa ka di ri ya re he ma za ko u ni e le ke e.



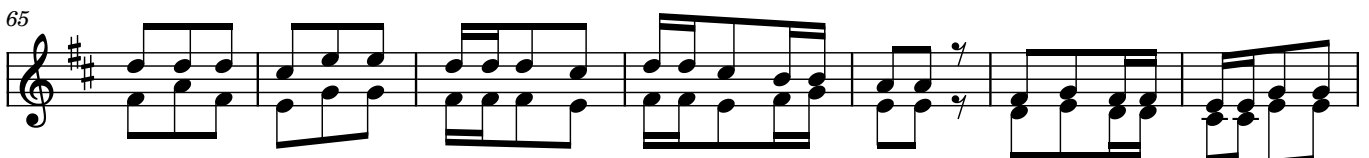
2.Na mi ni li ye ma ski ni na m tu wa hu zu ni, Mungu wa wo ko vu wa ngu u



ta ni i nu a ni ta li si fu ji na la Mu ngu kwa wi mbo na mi



ni ta m tu ku— za kwa shu kra ni.



3.Wa li o o ne wa wa ta ka po o na wa ta fu ra hi, E nyi M m ta fu ta o



Mu ngu Mi o yo ye nu i hu ishwe kwa ku wa Bwa na hu wa si ki a wa hi

78

ta ji wa la ha wa dha ra u wa— fu ngwa wa ke.

83

4. Ma a na Mun gu a ta i oko a Sa yu ni, na ku i je nga mi ji ya Yu da

91

Wa za o wa wa tu mi shi wa ke wa ta i ri thi, na o wa li pen da o ji na la ke

98

wa ta ka a hu mo.