

NAWE BWANA UKANISAMEHE
Zab.31:1-2,5,7,11, (k) 5

Na, Eliya G Mgimiloko,
ADEM - Bagamoyo.
0786 / 0655-302218

Taratibu

Soprano

Na - we Bwa - na - u - ka - ni - sa me - he - u - po

Tenor/Bass

Detailed description: This system contains the first two staves of the musical score. The top staff is for Soprano and the bottom staff is for Tenor/Bass. Both are in 4/4 time with a key signature of one sharp (F#). The lyrics are: 'Na - we Bwa - na - u - ka - ni - sa me - he - u - po'. The music features a simple harmonic accompaniment with some syncopation.

S./A.

to - vu - - wa - dha - mbi ya - - ngu, na - we Bwa - na - u - ka - ni -

T./B.

Detailed description: This system contains the next two staves. The top staff is for Soprano/Alto and the bottom staff is for Tenor/Bass. The lyrics are: 'to - vu - - wa - dha - mbi ya - - ngu, na - we Bwa - na - u - ka - ni -'. The musical notation continues with similar harmonic patterns.

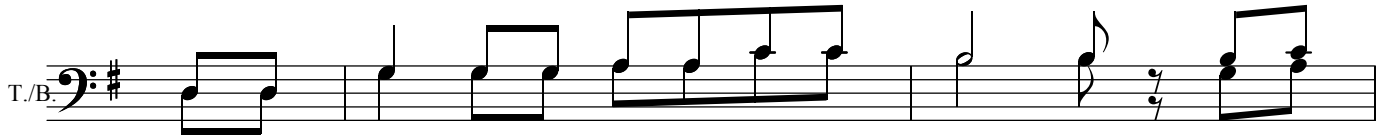
S./A.

me - he - u - po to - vu - wa - dha - mbi - - ya - - ngu, - Na - we ya - - ngu

T./B.

Detailed description: This system contains the final two staves. The top staff is for Soprano/Alto and the bottom staff is for Tenor/Bass. The lyrics are: 'me - he - u - po to - vu - wa - dha - mbi - - ya - - ngu, - Na - we ya - - ngu'. A first ending bracket labeled '1.' spans the final two measures of the system. The piece concludes with a double bar line.

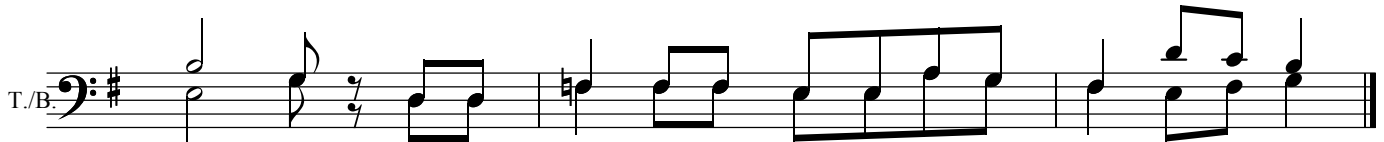
Mashairi - Tenor & Bass



1. He - ri - a - li - ye - sa - me - he - wa - dha - mbi na - ku -
2. Na - li - ku - ju - - li - sha - dha - mbi - ya - ngu wa - la -
3. Ndi - - we - si - - ta - - ra - - ya - ngu u - ta -
4. M - fu - ra - hi - - e - - ni - - Bwa - sha - ngi -



1. si - ti - li - wa - ma - ko - sa ya - ke, - he - ri - Bwa - - na - a - si - ye - mhe - sa -
2. si - ku - u - fi - cha - u - po - to - vu, - ni - ta - ki - ri - ma - a - si - ya - ngu - kwa -
3. ni - hi - fa - dhi - - na - ma te - so - u - ta - ni - - zu - - ngu - - sha - na -
4. li - e - ni - e - nyi - we - nye ha - ki - pi - ge - ni - vi - ge - le - ge - le - vya - fu -



1. bi - a - u - po to - vu - a - mbaye - ro - ho - ni ha - mna - hi - la
2. Bwa - na - na - we u - ka - ni - sa - - me - he dha - mbi - ya - ngu
3. nyi - mbo - u - ta ni - zu - ngu - sha - na - nyi - mbo za - wo - ko - vu
4. ra - ha - ni - nyi nyo - te - m - li - o - wa - nyo fu - wa - mo - yo.

Free Organ