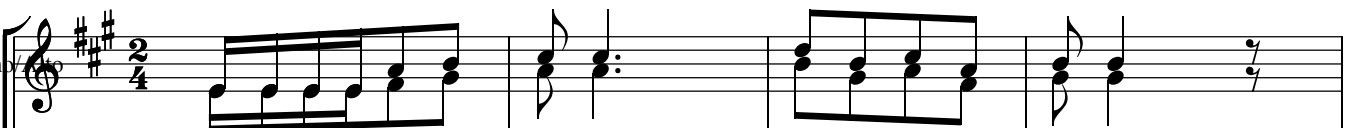


BWANA ALITUTENDEA MAKUU

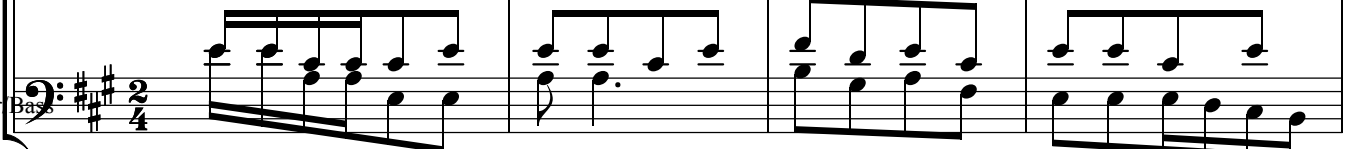
Eliya G Mgimiloko
Mpanga Parish
Ifakara

Soprano



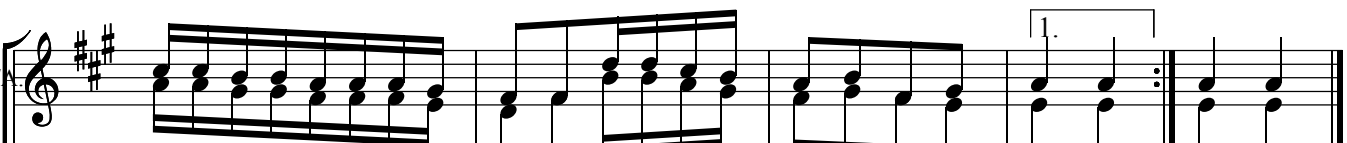
Bwa-na - a - li - tu - te - nde - a Bwa na ma - - mbo-ma ku - u tu li

Tenor/Bass



Bwa-na - a - li - tu - te nde - a Bwa-na ma - - mbo-ma ku - u - tu li - ku-wa


S./A.



tu - li - ku-wa-tu - - ki-fu ra - hi - tu - li - ku-wa tu - - ki - fu ra - hi ra - hi

ku wa tu ki - fu


T./B.



tu ki fu ra hi tu li ku wa


Mashairi

S./A.



1. Bwa - na - a - li - po - wa - re je - za - ma te - ka - wa - sa yu - ni
2. Ndi - - - po - wa - li - po se - ma - ka - ti - ka - ma - ta - i - fa
3. Ee - - Bwa - na - u - wa - re je - ze - watu - we - tu - wa - lo fu - ngwa
4. I - nga - wa - m - tu - a - na kwe - nda - za ke - a ki - - li - a

S./A.

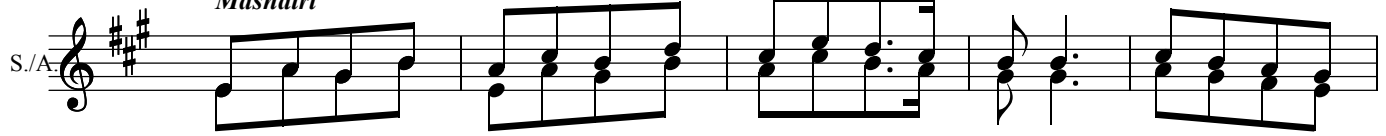


1. tu - li - ku - wa - ka - ma - wa - o ta - o - ndo - to - - - - - **O r g a n** - - -
2. Bwa-na - a - me-wa - te - nde - a mambo-ma - ku - u - - - - -
3. ka - - - ma - vi - - ji - to vya - ku - si - ni - - - - -
4. a - zi - chu - ku - a - po - mbe - gu za - ku - pa - nda - - - - -

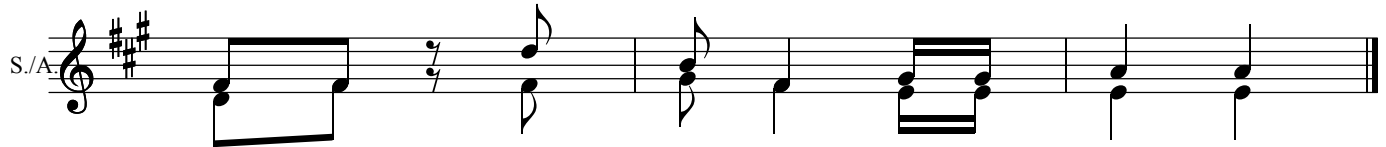
Bwana Alitutendea Mambo Makuu

E. G. Mgimiloko

Mashairi



1. ndi - po - ki - nywa che - tu - ki - li po - ja - a - ki che - ko na - u - li - mi
2. Bwa - na - a - li tu - te - nde - a ma - - mbo - ma ku - u tu - - li - -
3. wa - pa - nda - o wa - pa - nda - o kwa - - a - ma cho - zi wa - ta - vu - na
4. ha - ki - ka - a ta - ru - di - kwake le - le - za - fu ra - ha a - i - chu - ku



1. we - tu ke - le - le za - fu ra ha
2. ku - wa tu - - ki fu - - ra hi
3. kwa - ke le - le - za fu - - ra ha
4. a - po mi - ga - - nda - - ya ke.

Mgimiloko Mahuvi
mgimilokoteacher@gmail.com
0655 302 218

Mgimiloko Mahuvi
mgimilokoteacher@gmail.com
0655 - 302 218