

MAISHA YANGU MIMI

S
A

Ma i sha yangu ha pa du ni a ni ta ngu ni ki wa m to to na

T
B

Detailed description: This system contains the first six measures of the song. It features four staves: Soprano (S), Alto (A), Tenor (T), and Bass (B). The music is in 2/4 time with a key signature of two sharps (F# and C#). The vocal parts are written in treble clef, and the piano accompaniment is in bass clef. The lyrics are: "Ma i sha yangu ha pa du ni a ni ta ngu ni ki wa m to to na".

7

sa sa ni - ki ja na na ha ta ni ki wa m ze e Ma i sha ya ngu

Detailed description: This system contains measures 7 through 13. The vocal parts continue with the lyrics: "sa sa ni - ki ja na na ha ta ni ki wa m ze e Ma i sha ya ngu". The piano accompaniment provides harmonic support with chords and moving lines.

14

yo te ni me ya ka bi dhi mi ko no ni mwa ye su ye ye Bwa

Detailed description: This system contains measures 14 through 19. The vocal parts conclude with the lyrics: "yo te ni me ya ka bi dhi mi ko no ni mwa ye su ye ye Bwa". The piano accompaniment ends with a final chord and a double bar line.

20

Ye ye Bwa na na

na ye ye Bwa na ye ye Bwa na ye ye Bwa na ye ye Bwa na

na ye ye Bwa na ye ye Bwa na ye ye Bwa na ye ye Bwa na

25

ndi ye

ye ndi ye ndi ye ndi ye a na ni sa i di a

ndi ye ndi ye ndi ye a na ni sa i di a ni shi nde ma gu mu yo

ye ye Bwa na ye ye ndi ye a na ni sa i di a

31

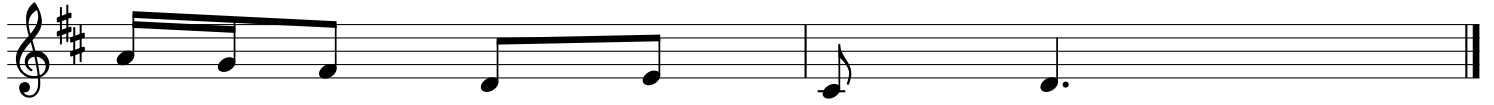
te.

32



1.Ni ki wa kwe nye wi mbi zi to la ma ta ti zo Ye su ndiye a na ku
2.Ni ki wa na ma wa zo me ngi pi a hu dhu ni Ye su ndiye a na ku

38



wa fa ra ja ya - ngu.
wa fa ra ja ya - ngu.