

0784624120
0767624120

MT.YOSEFU MFANYAKAZI

Wimbo maalum

'LYOBA C.S (BABU)

Mpanda-Cathedral

28,APRIL,2021

Polepole

Ee Mu ngu mwu mba wa vyo te u li wa pa wa tu wo te

The first system of the hymn consists of two staves of music. The upper staff is in treble clef and the lower staff is in bass clef. The key signature has two sharps (F# and C#), and the time signature is 3/8. The lyrics are: Ee Mu ngu mwu mba wa vyo te u li wa pa wa tu wo te.

a mri ya ku fa nya ka - zi Ee zi tu na ku

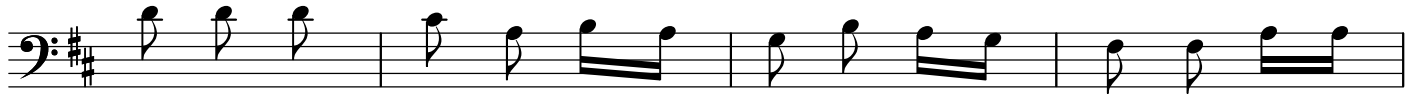
The second system of the hymn consists of two staves of music. The upper staff is in treble clef and the lower staff is in bass clef. The key signature has two sharps (F# and C#), and the time signature is 3/8. The lyrics are: a mri ya ku fa nya ka - zi Ee zi tu na ku. There are first and second endings indicated by brackets and numbers 1 and 2.

o mba kwa ma o mbe zi ya mta ka ti fu Yo se fu

The third system of the hymn consists of two staves of music. The upper staff is in treble clef and the lower staff is in bass clef. The key signature has two sharps (F# and C#), and the time signature is 3/8. The lyrics are: o mba kwa ma o mbe zi ya mta ka ti fu Yo se fu.

tu fa nye ka zi i li tu pa te tu zo mbi ngu ni

The fourth system of the hymn consists of two staves of music. The upper staff is in treble clef and the lower staff is in bass clef. The key signature has two sharps (F# and C#), and the time signature is 3/8. The lyrics are: tu fa nye ka zi i li tu pa te tu zo mbi ngu ni.



1. Yo se fu msi ma mi zi we tu twa ja kwa ko we we
2. Sa la ka zi vi we ngu zo po po te pa le i li
3. Zi o mbe e na fa mi li a ze tu zo te pi a



ndi we mwo mbe zi we tu twa tu ma i ni msa a da wa ko
tu we m fa no bo ra ka ma m ta ka ti fu Yo se fu
li o mbe e ta i fa le tu a ma ni i ka ta wa le

*Copied by; Paschal Lusangija
paschallusangija@gmail.com
0782402378-0743402378*