

KWELI TUMEKOMBOLEWA

PASAKA

Na, P.D. Mkali
Kidatu -Morogoro
12 / 03 / 2022
0658383257

Kwauchangamfu

Musical score for the first system of 'Kwauchangamfu'. It features a grand staff with a treble clef and a bass clef, both in 6/16 time and key of D major. The melody is written in the treble clef, and the accompaniment is in the bass clef. The lyrics are: A le lu ya ni sha a me fu fu Ni sha ngwe_ _ ka fu fu_ _ ngwe du ni ka le o kwe.li ni sha si ku ya ta a ni ni sha si ku ya ta ngwe tu Bwa na tu ka ma

Musical score for the second system of 'Kwauchangamfu'. It features a grand staff with a treble clef and a bass clef, both in 6/16 time and key of D major. The melody is written in the treble clef, and the accompaniment is in the bass clef. The lyrics are: a me fu fu a li vyo se ka fu fu ka ka fu fu ka a me ka ha ki ya shi nda ma ka hu yu ni u ti Mu ngu A le

Musical score for the third system of 'Kwauchangamfu'. It features a grand staff with a treble clef and a bass clef, both in 6/16 time and key of D major. The melody is written in the treble clef, and the accompaniment is in the bass clef. The lyrics are: lu ya ni sha ngwe kwe li Bwa na a me fu fu ka kwe li

14

2.

Ye su n m shi ndi wa la ha fi te na

fu fu ka kwe li a me fu fu ka na wa la ha fi

18

a me shi nda ma u ti sa sa yu m zi ma

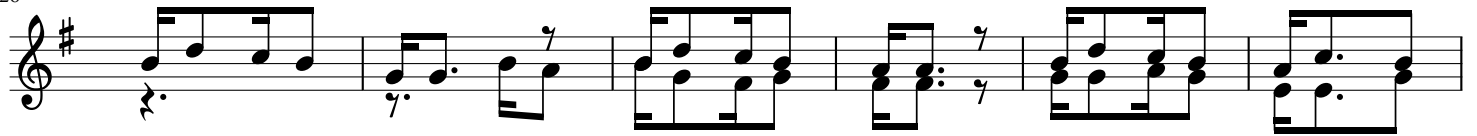
te na a me shi nda ma u ti yu m zi ma

22

twi mbe so te a le lu ya kwe li tu me ko mbo le wa

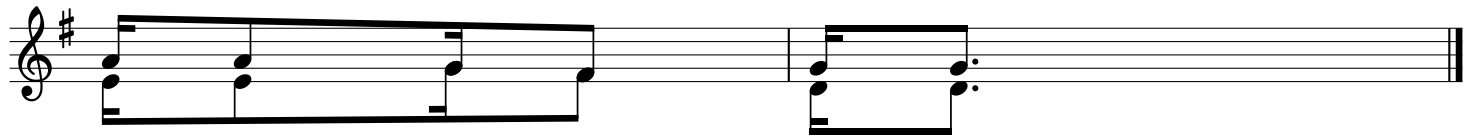
Fine

26



1. Tu pi ge ma ko fi (pi a) nango ma tu che ze tu m shangi li e Bwa
 2. Tu pi ge vi na nda (pi a) na vi ge le ge le tu m shangi li e Bwa
 3. Tume kombo le wa (kwe li) to ka u tu mwa ni njo ni wa kri stunjo ni

32



na a me fu fu ka
 na a me fu fu ka
 tu m sha ngi li e