

Ndipo Niliposema

Na, Gaudens .C. Kihwili

0768303031

Kigonsera-MBINGA

Musical score for the first system of the song. It consists of two staves: a treble clef staff and a bass clef staff. The key signature is one sharp (F#) and the time signature is 2/4. The melody is written in the treble clef, and the accompaniment is in the bass clef. The lyrics are: Ndi po ni li po se ma ta za ma ni me ku ja ku ya fa nyama pe nzi ma - pe nzi

Musical score for the second system of the song. It consists of two staves: a treble clef staff and a bass clef staff. The key signature is one sharp (F#) and the time signature is 2/4. The melody is written in the treble clef, and the accompaniment is in the bass clef. The lyrics are: pe nzi ya ko

Musical score for the third system of the song. It consists of a single treble clef staff. The key signature is one sharp (F#) and the time signature is 2/4. The melody is written in the treble clef. The lyrics are: 1. Na li mgo ja Bwa na kwa sa bu - ri a ka ni i na mi a a ka ki si ki a ki li o cha

Musical score for the fourth system of the song. It consists of a single treble clef staff. The key signature is one sharp (F#) and the time signature is 2/4. The melody is written in the treble clef. The lyrics are: ngu a ka ti a wimbo m pya ki nywa ni mwa ngu ndi o si fa za ke Mu ngu we

Musical score for the fifth system of the song. It consists of a single treble clef staff. The key signature is one sharp (F#) and the time signature is 2/4. The melody is written in the treble clef. The lyrics are: tu

25



2.Dhabi hunama to le o hu ku pe ndezwa na zo ma si ki o ya ngu u me - ya zi bu

32



a ka fa ra na sa da ka za dha mbi hu kuzi ta ka ndi po ni li po se ma ta za ma ni

39



me ku ja

41



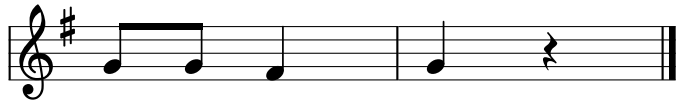
3.Ka ti ka go mbo la chu o ni me a ndi ki wa ku ya fa nya ma pe nzi ma - pe nzi ya

48



ko Ee Mu ngu wangu ndi yo fu ra ha ya ngu na a mshe ri a ya ko i mo mo

55



yo ni mwa ngu