

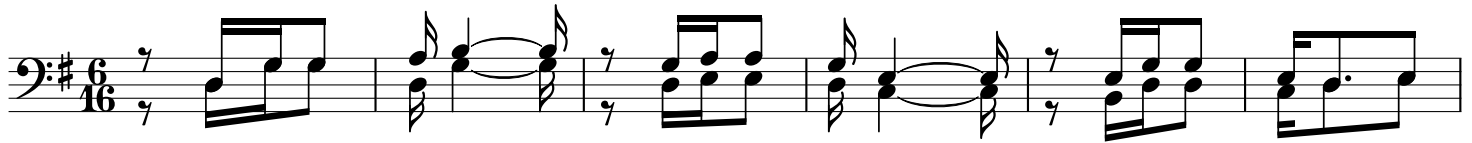
Shangwe ya Baba Yetu

By Paschal VK(PAVEKO)

0752863684-0621436716

2/6/2021-SONGEA

Kwau furaha na u changamfu



1.Njo o ni wo te tu sha ngi li e tu she re ke e sha
Ni ju bi le i ni shu ku ra ni a na shu ku ru kwa

2..Tu mu o mbe e Ba ra ka te le ne e ma nyi ngi zi
U pe ndo wa ke hu ru ma ya ke u ti i wa ke kwa

3.Ma i sha ya ke ya e nde le e ku du mu kwe tu ya
Tu na po sa li tu na po i mba pa mo ja na ye Mu

7

ngwe ke we ke we ngu
1 Ya Ba ba ye tu
Pa mo ja na ye
fu ra ha kwe tu
2 Mwe nye zi Mu ngu
Mwe nye zi Mu ngu
tu si ma mi e

11

le o a na

fa nya ju bi le - i a na shu ku - ru
Mu - ngu

A na m shu ku ru Mu ngu kwa za wa di
Mu ngu a m li nde

a li yo pe wa na Mu ngu na si tu na
ma i sha ye nye fu ra ha

a li yo pe - wa ka ti ka ma - i sha ya ke
a m ja li - e a m tu mi ki e da

mu o mbe a e e kwa ke

tu na mu o mbe a ma na mi le le e

2.

Detailed description: This musical score is for page 24 and consists of three staves. The top staff is a vocal line in bass clef with a key signature of one sharp (F#). It begins with a melodic line of eighth notes: G2, A2, B2, C3, D3, E3, F#3, G3. This is followed by a half note G3, a quarter rest, and a quarter note G3. A repeat sign follows. The second staff is a piano accompaniment in treble clef, and the third is in bass clef. Both piano parts start with a whole rest. The piano accompaniment begins with a 7/8 time signature. The vocal line has lyrics: 'mu o mbe a e e' in the first measure, 'kwa ke' in the second. The piano accompaniment has lyrics: 'tu na mu' in the first measure, 'o mbe a' in the second, 'ma na mi' in the third, and 'le le e' in the fourth. A second ending bracket labeled '2.' covers the final two measures of the piano accompaniment, which end with a fermata over the final note. The piano accompaniment concludes with a fermata over the final note.