

# YUKO WAPI YEYE

NOEL (X - MASS)

D. Cheru

25.07.2005

Allegro

♩ = 66

1. 2.

Yu ko wa pi ye ye a li ye za li wa mfa\_lme wa wa ya hu di Yu ko wa ya hu di kwama

This system contains the first two measures of the piece. It features a treble and bass clef with a key signature of one sharp (F#) and a 3/8 time signature. The melody is in the treble clef, and the accompaniment is in the bass clef. There are two first endings (1.) and two second endings (2.) indicated by bracketed repeat signs.

6 a na tu li o na nyo ta ya ke tu li o na nyo ta

1. 2.

kwa ma a na tu li o na nyo ta ya ke masha ri ki kwama masha ri ki Na si

a na tu li o na nyo ta ya ke tu li o na nyo ta ya ke masha ri ki kwama masha ri ki

kwama a na tu li o na tu li o na nyo ta

This system contains measures 6 through 10. It continues the melody and accompaniment from the first system. It includes two first endings (1.) and two second endings (2.).

11 tu me ku ja tu me ku ja

1. D.S. 2.

Na si tu me ku ja tu me ku ja ku msu ju di a kwa ma a.

tu me ku ja na si tu me ku ja ku msu ju di a kwa ma a.

Na si tu me ku ja ku m su ju di a

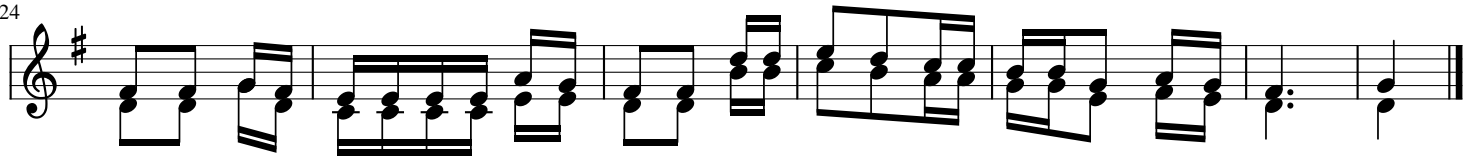
This system contains measures 11 through 14. It concludes the piece with a double bar line. It includes two first endings (1.) and two second endings (2.), with the second ending marked 'D.S.' (Da Capo).

16



1.Nao wa li po si ki a ma ne no ya\_\_\_\_\_mfa lme Nao  
 wa li po si ki a ma ne no wa li shikanji a Na ta za ma i le  
 2.Nao wa li po i o na i\_\_\_\_\_ le nyo\_\_\_\_\_ ta wali  
 fu ra hi fu ra ha ku\_\_\_ bwa ku\_\_\_\_\_ bwa waka i ngi anyu

24



nyo ta wa li o i o na ma sha ri ki i li ta ngu li a i ka si ma ma ju u.  
 mba ni wa ka mu o na m to to pa mo ja\_\_\_ na Ma ri\_\_\_ a\_\_\_ ma ma\_\_\_ ya ke.