



# NSHI ZE IMBERE YANJE

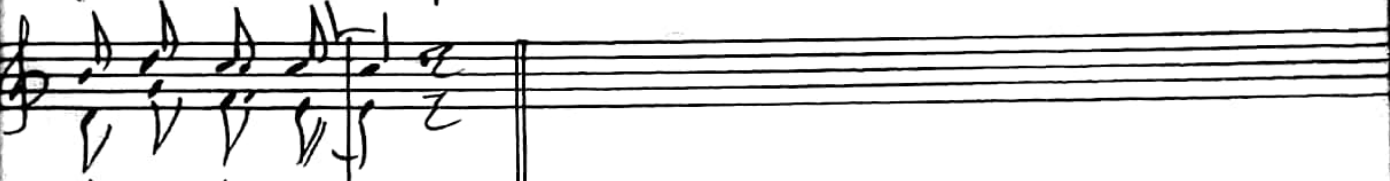
par: IBA. M. Jule,  
le 10/07/2020



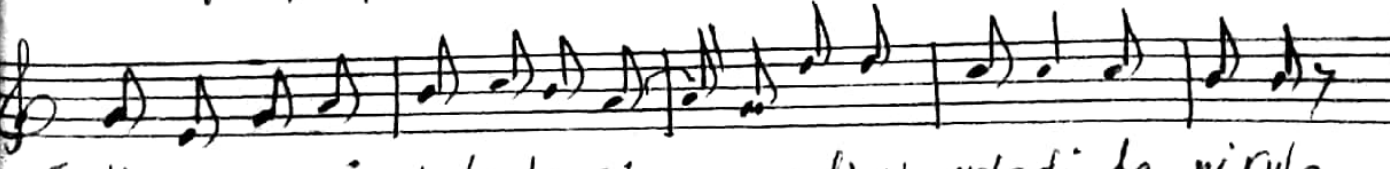
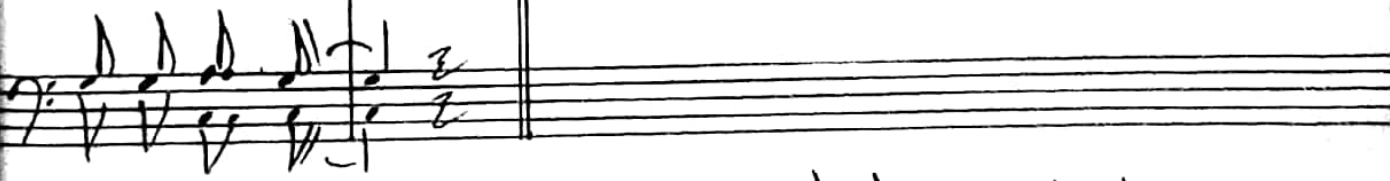
E We Mana yanje - Nshi ze imbere yanje Amazinku muri ro  
E We Mana yanje - Nshi ze imbere yanje uru pfun'u buzi ma



None mwami wanjje ndagusa uye (cane) umpiti shemwo - inyano



tora Mana -



I Mana muri ububuzi - mandimwo ndadi da nirwa  
II a) Mwami wanjje nico gitu - manshize imbere yanje  
b) Mwami wanjje nico gitu - manshize imbere yanje



n'i bintu vyinshi cane, nka bura i cu nokora Mwanu  
 a mazi numu iro, ngo umpiti she mw'iki bereye  
 u rufu n'ubu zima, ngo umpiti she mw'iki bereye

Rwanditswe na: IRA.M. Jule