

AMEJIFUFUA NI MZIMA:

Na:- C.A. Gashule

Chamazi - Dar - Es - Salaam

0782 201 686 | 0719 201 686

Imba kwa Uchangamfu Mkubwa

S
A

Kama a li m fu fu a La za ro; Kwa ni ni a shi ndweye ye;

T
B

Musical notation for the first system, Soprano and Alto parts. The lyrics are: Kama a li m fu fu a La za ro; Kwa ni ni a shi ndweye ye;

4

Mwana wa Mungu a meji fufu a ni m zi - ma. ma. Wote

Musical notation for the second system, Soprano and Alto parts. The lyrics are: Mwana wa Mungu a meji fufu a ni m zi - ma. ma. Wote

9

twimbe ni A le lu ya; Bwana le o a me fu fu ka twimbe A le lu

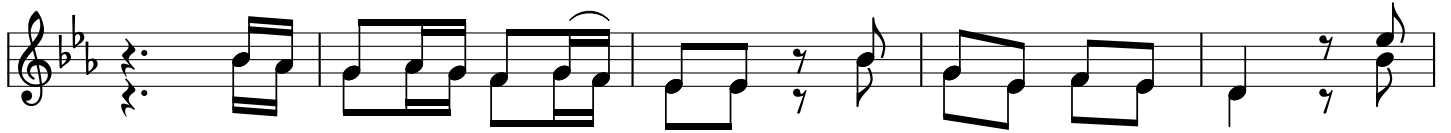
Musical notation for the third system, Soprano and Alto parts. The lyrics are: twimbe ni A le lu ya; Bwana le o a me fu fu ka twimbe A le lu

14

lu ya Wo te lu ya.

Musical notation for the fourth system, Soprano and Alto parts. The lyrics are: lu ya Wo te lu ya.

16



1.Ni fu ra ha pi a na - shangwe; Na vi ge le ge le; Mwa
 2.Si ku hi hi ndiyo a - li yo, i fa nya Bwa - na'; Tu

21



na wa Mu ngu le o ka fu fu - ka.
 fu ra hi e na ku sha ngi li - a.

Umechorwa Na:-Zacharia Mganga "Za.M"
Mawasiliano:- 0749 497 955 | 0676 497 955,
0685 211 313 | 0627 293 272.
Barua Pepe:- mganga812@gmail.com