

ALELUYA

JOSEPH KASHINDYE
PAROKIA YA BUSONDO
2021

A LE LU YA A LE LU YA A LU LU - YA A LE LU YA

This system contains the first four measures of the piece. It features a treble and bass clef with a key signature of two sharps (F# and C#) and a 2/4 time signature. The melody is primarily in the treble clef, while the piano accompaniment is in the bass clef. The lyrics are written below the notes.

5 A LE LU YA A LE LU YA A LE LU YA A LE LU YA A LE LU YA

1. 2. YA A LE LU A

A LE LU YA A LE LU YA A

This system contains measures 5 through 9. It includes a first ending (1.) and a second ending (2.) at the end of the system. The lyrics are written below the notes, with some words appearing on multiple lines.

10 A LE LU - YA A LE LU - YA A LE LU - YA

YA A LE LU YA A LE LU - YA A LE LU -

LE LU YA A LE LU YA A LE LU YA A

A LE LU = = = = YA A LE LU = = = = YA A LE LU = = = = YA

This system contains measures 10 through 12. It features a repeat sign at the beginning of the system. The lyrics are written below the notes, with some words appearing on multiple lines.

13 A LE LU - YA A LE LU - YA A LE LU - YA

- YA A LE LU YA A LE LU YA A LE LU -
LE LU YA A LE LU YA A LE LU YA A LE

A LE LU YA A LE LU = = = YA A LE LU = = = YA

16 A LELU - YA A LELU - YA A

YA A LE LU - YA A LE LU YA A LE LU - YA ALELU -
LU YA LE - LU - YA A

A LE LU = = = YA A LE LU YA A LE LU YA

20 2.

YA

21 Soprano

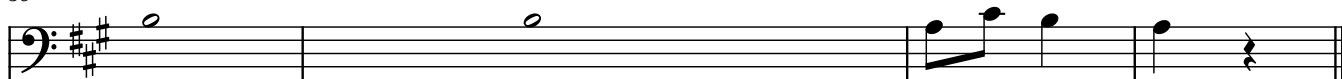
1. U JE RO HOM TA KA TI FU U ZI E NEE NYO YO ZA WA A MINI

26

WA KO U WA TI E MA PE NDO YA KO A LE LU YA A LELU YA.
ANGALI MANENO YA DOM;

31 Tenor & Bass

39



NB;MAIMBILIZIWAIMBESAUTI
MOJAPEKEE
KUIMBAAUKUSOMA