

Roho wa Bwana yu Juu Yangu

Na, Stephen Kuyuga

0765502652

2015

8

f

Ro ho wa Bwa na yu ju u ya ngu yu ju u ya ngu ngu Ame

1. D.C. 2.

Detailed description: This is the first system of a musical score for a piano. It consists of two staves, treble and bass clef, in a 2/4 time signature with a key signature of two flats (B-flat and E-flat). The music begins with a forte (*f*) dynamic. The melody is primarily in the treble clef, with accompaniment in the bass clef. The lyrics are written below the notes. The system concludes with a first ending (1. D.C.) and a second ending (2.).

FREE ORGAN

ni pa ka ma fu ta Ame ni pa ka ma fu ta Ame ni pa ka ma fu - ta ku i
A me ni pa ka

Detailed description: This is the second system of the musical score. It is marked with a double bar line and a section symbol (§) at the beginning, followed by the text 'FREE ORGAN'. The notation continues with two staves in the same key and time signature as the first system. The lyrics are split across two lines. The system ends with a double bar line.

14

hu bi ri I nji - li A me li

1. D.S. 2.

Detailed description: This is the third system of the musical score. It begins with the number '14' in the left margin. The notation continues with two staves. The lyrics are written below the notes. The system concludes with a first ending (1. D.S.) and a second ending (2.), both marked with repeat signs.

19



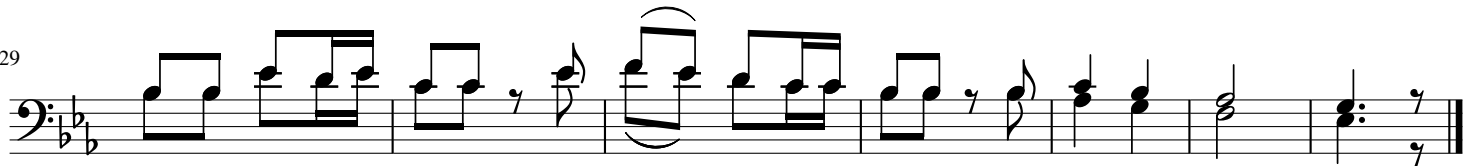
1.Bwana a me ni tu ma ku wa hu bi ri mata i fa a - me ni
 3.Bwana a se ma ni ta wa nyu nyu zi a ma ji sa fi na ku wa pa

25



tu ma ku i hu bi ri I nji li
 ni nyi mo yo m pya nda ni kwe ni

29



2.Bwana a me ni pa ka ma fu - ta ku hu bi ri ha ba ri nje ma