

# TUPELEKE VIPAJI VYETU

Na, D . Rukurugu  
2007 Lupasa -Masasi  
MTWARA

Musical score for the first system of the song. It consists of a grand staff with a treble clef on the upper staff and a bass clef on the lower staff. The time signature is 2/4. The melody is written in the treble clef, and the accompaniment is in the bass clef. The lyrics are written below the treble staff. The system includes a repeat sign and two endings, labeled '1.' and '2.'.

Tu pe le ke vi ta ji vye tu tu m pe Bwa na Ni i  
sha ra ya u pe ndo kwa ke Mu ngu we tu Tupe

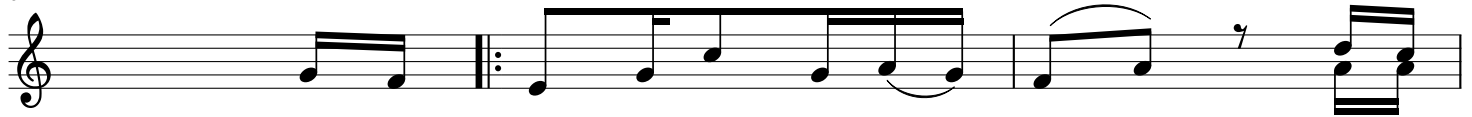
Musical score for the second system of the song. It consists of a grand staff with a treble clef on the upper staff and a bass clef on the lower staff. The time signature is 2/4. The melody is written in the treble clef, and the accompaniment is in the bass clef. The lyrics are written below the treble staff. The system includes a repeat sign.

le ke tu pe le ke Bwana a ta vi po ke a kwa u pe ndo nashu  
Tu pe le ke vi pa ji kwa u pe ndo

Musical score for the third system of the song. It consists of a grand staff with a treble clef on the upper staff and a bass clef on the lower staff. The time signature is 2/4. The melody is written in the treble clef, and the accompaniment is in the bass clef. The lyrics are written below the treble staff. The system includes a repeat sign and two endings, labeled '1.' and '2.'.

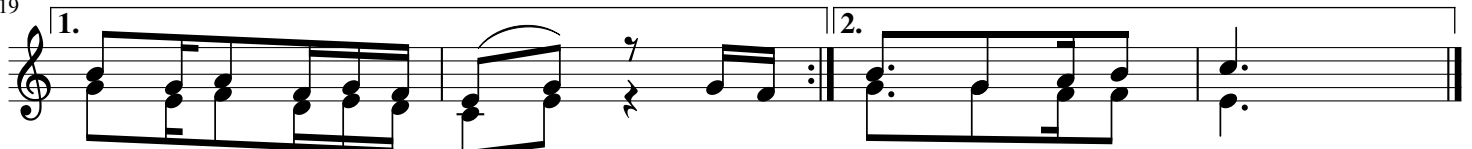
kra ni Bwa na a ta vi po ke a Tu pe  
shu kra ni

16



1. Ni m ka te na di va - i - tu nda  
le ta kwa ko Ba - ba - kwa mo\_\_
2. Ma za o ya ma sha mba - ni - ka zi  
le ta kwa ko Ba - ba - twa o\_\_
3. Tu ba ri ki si si so - te - ba ri  
fa e ma i sha - ni - tu ki\_\_
4. Mi fu go tu li yo na - yo - na vyo  
twa vi le twa Kwa - ko - twa o\_\_

19



- la m za - bi - bu - twa vi  
yo wa shu kra ni
- ze tu wa na da - mu - Twa ya  
mba ya ta ka se
- ki na ka zi ze - tu - Zi tu  
sa i di a na
- vyo te tu lo na - vyo - Vyo te  
mba vi ta ka se

**NB . Baada ya shairi Imba  
kiitikio moja kwa moja  
usiweke free organ**