

HERI NITOE

Umerekodiwa na Kwaya ya Ottonastia
Kigango cha Mletele Parokia ya Matogoro
Jimbo la Songea

By Paschal VK(PAVEKO)

0752863684 Songea

6/6/2022

Vivace

Musical notation for the first system of the song. It features a treble clef and a 6/16 time signature. The melody is written in the treble clef, and the piano accompaniment is in the bass clef. The lyrics are: Ka ti ka ku to a ndipo ni na pa ta fu ra ha na a ma - ni ni -

Musical notation for the second system of the song. It features a treble clef and a 6/16 time signature. The melody is written in the treble clef, and the piano accompaniment is in the bass clef. The lyrics are: he ri mi - mi ni to e ku li ko ku po ke - a mh la zi ma ni to e ndi po ni -

Musical notation for the third system of the song. It features a treble clef and a 6/16 time signature. The melody is written in the treble clef, and the piano accompaniment is in the bass clef. The lyrics are: pa te fu ra ha na a ma - ni ni - he ri mi - mi ni to e ku li ko ni - he ri

1. | 2.

ku po ke a Ka ku po ke a na ku si hi ndu - gu ya ngu pe

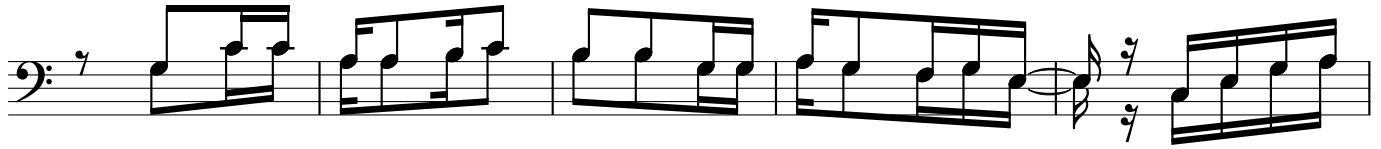
nda ku to a ku - li ko ku po - ke a ja po ku po ke a na ko

ku - po ke - a ja po ku

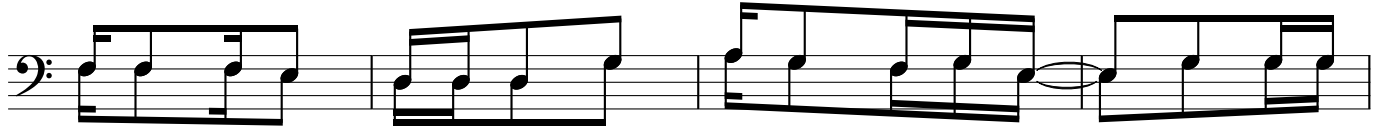
1. | 2.

ra ha na we to a u po ke e we to a u po ke e

ndu gu



1. He ri ku to a ku li ko - ku po ke a ndu - gu kwa ni Mu ngu
 2. Ma fa ni li o ya ngu ha - ya - ni kwa sa ba bu ni na pe nda
 3. Sa i di a wa si o ji we za - ki la wa ka ti wa ja ne wa



u pe nda ku to a ku li ko ku po ke a si si
 sa na ku m to le a Mwe nye zi Mu - ngu na ye
 le ma vu vi po fu na wa go njwa ha - o o -

tu to
 ni ja
 fu ra

Ka ti ka ku to a
 e
 li
 ha