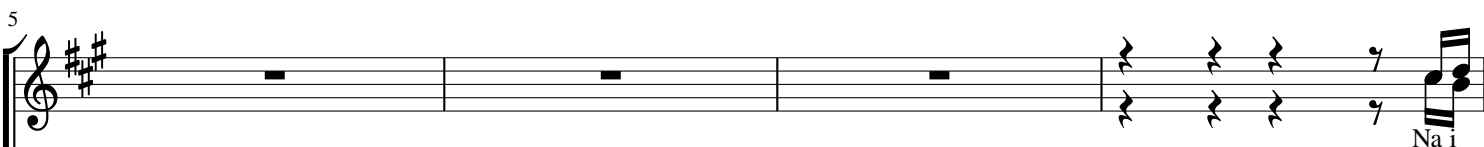


# SAUTI YANGU 1

Yusto Bhugohe  
Rombo-Kilimanjaro



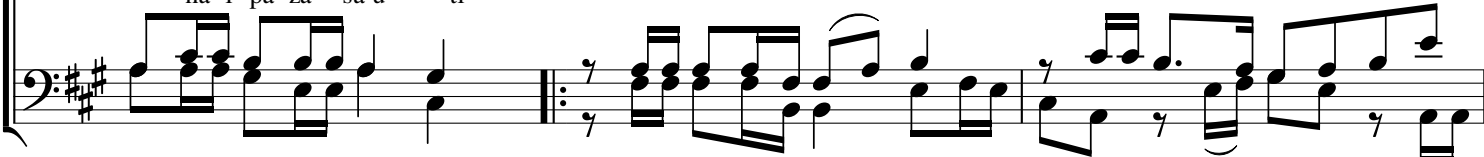
1. Sa u ti ya ngu Ee Mu ngu i ku fi ki e - hu ko u li ko Mu ngu ju u mbi ngu ni - na
2. Shi da na ma ta - ti zo na ku ka bi dhi - nya ka ti zo te Mu ngu u we na mi mi - ma
3. Ma si ngi zi o ya wa tu u ni e pu she - u ki pe nda Ee Mu ngu ni ya e pu ke - ki
4. A si li ya ko Ee Mu ngu - ni U pe ndo - ma pe nzi ya ko kwa ngu - ya ti mi zwe - si



1. ya ka bi dhi - kwa ko Mu ngu mwe nye zi - ma i sha ya ngu yo te u ya o ngo ze Ee - Mu - ngu
2. go njwa nja a - vi ta chu ki dhu lu ma - u ki pe nda Ee Mu ngu vya we za ko ma Ee - Mu - ngu
3. li o cha ngu ee Mu ngu cha we za ko ma - u ki pe nda Ee Mu ngu si we zi li a Ee - Mu - ngu
4. ka ma ni ta - ka vyo mi mi m dha mbi - ba li ma ta kwa ya ko Mu ngu mwe nye zi Ee - Mu - ngu



- pa za sa u ti kwa ko Mu ngu mu we za wa me pe si na ma gu mu u ni
- kwakoMu ngu mwenye - zi wa - re - he ma u ni  
kwakoMu ngu mu we - za me pe si ma gu mu u ni



- na i pa za sa u ti
- kwa koMu ngumwe nye zi mwi ngi wa re he - - ma u ni  
kwakoMu ngu mu we za wa me pe si ma - gu mu u ni

1. hu - ru - mi e na i pa za sa u ti kwa ko 2. sa - i - di e - - organ

na i pa za sa u ti

The image shows a musical score for an organ. It consists of two systems of music. The first system has two staves: a treble clef staff and a bass clef staff. The key signature is two sharps (F# and C#). The first system is marked with a '1.' and contains the lyrics 'hu - ru - mi e na i pa za sa u ti kwa ko sa - i - di e - - organ'. The second system is marked with a '2.' and contains the lyrics 'na i pa za sa u ti'. The music features a mix of eighth and sixteenth notes, with some rests and repeat signs.

Copied by Anold Massawe  
0713131968