



BON ANNIEE  
UMWAKA MUSHASHA

By: TRA. M. Tule  
Le 20/12/2020

Tune ze - ruwetuse Bakri - stu - kukodu shitsekuru y'umu

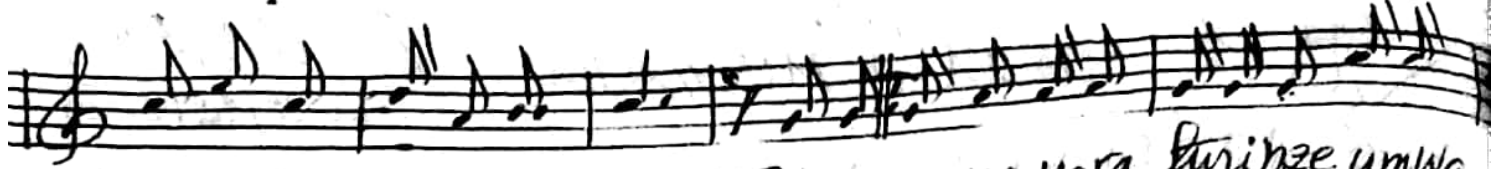
Si mukuru wabona nne roza - organ tukabadu tanguye -  
(w'umwaka mushasha)

- umwaka mu shasha - w'ibumbi bibiri namiro go ibirina rimwe

f r e e o r g a n f r e e

o r g a n f r - e e

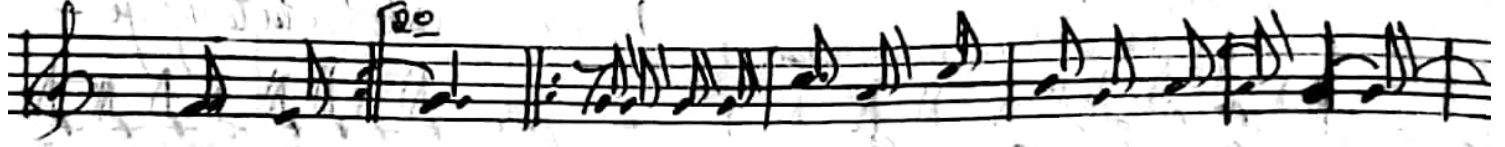
1-2



or ga n I ma - na yara turinze umwa  
 - wu he ze - ata  
 2. Hari - ho aba tashitse kuru  
 - kotwewetwawu shitse koturi



ka wa se - tura ni mu ze duke nguruki r'I  
 ngo ra ne - tu vu gadu - ti -  
 y'umu si - ari - ni mu ze duke nguruki r'I  
 ba zi ma - tu vu ga du - ti -



mana  
 mana  
 Borannee nziza ba kristumwe - se -  
 umwaka mu shasha  
 Borannee nziza ba kristumwe - se -  
 umwaka mu shasha

7 V V V  
 - tugi sa ngi - re.  
 - tugi sa ngi - re.

Rwanditswe I.R.A.M. Tub.