

**NITAKUSHUKURU MUNGU WANGU:** Na:- Henry Makene  
 St. Maxmilian - Choir  
 Chankorong Sub - Parish  
 Butundwe  
 0765 500 860

Andante

S  
A

Ni - ta kushu ku ru Mu ngu wa ngu, Mungu wa

T  
B

Ni - ta kushu ku ru

4

ngukwa mo yo wangu wo te, Mbe le ya mi u ngu ni ta ku i - mbi a za

9

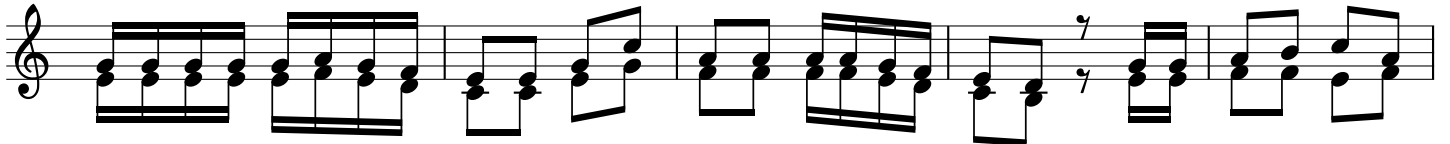
bu ri. Ni ta su - ju du, Niki li kabi ri he ka - lu he - ka - lu - la ko

suju du

16

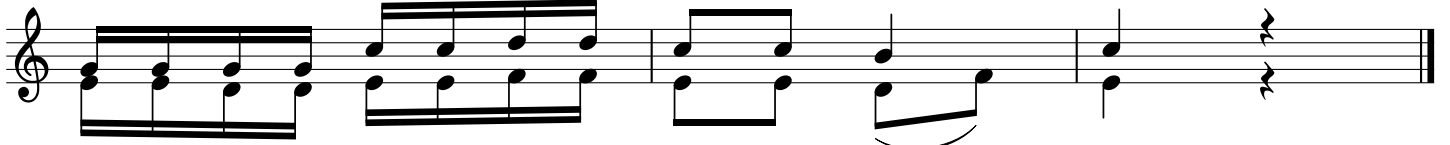
ta ka ti - fu.

18



1. Ni ta li shuku ru ji na la ko kwa a ji li ya fadhili za ko, Na u a mii ni fu  
 2. Si ku i le ni li yo ku i ta u li ni i ti - ki a, U ka ni fa ri ji

23



wa - ko - na u a mi ni fu wa - ko.  
 na fsi ya ngu na - ku ni ti a ngu - vu.

*Umechorwa Na:-Zacharia Mganga "ZaM"*  
*Mawasiliano:- 0749 497 955 / 0676 497 955,*  
*0685 211 313 / 0627 293 272.*  
*Barua Pepe:- mganga812@gmail.com*