



# DUNIA HII ITAZAME

By: IRA.M. Jule  
Date 01-07-2021

A WFP  
Nyarugu Su Camp.

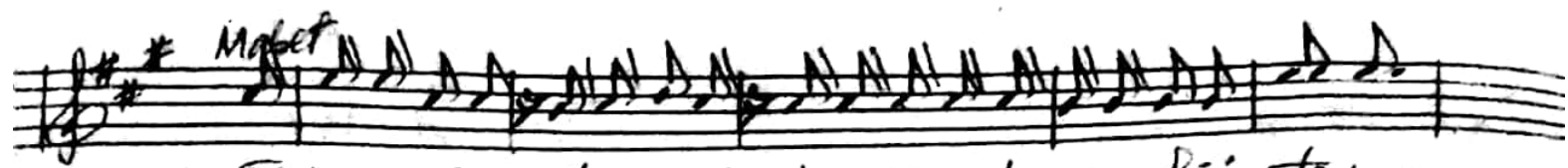
Chorus:

Handwritten musical notation for the first system of the chorus. It consists of a vocal line and a piano accompaniment line. The key signature has two sharps (F# and C#), and the time signature is 6/8. The lyrics are: "Ta zama ta zama, E Mungu wangu - ta -- Du nia hii ta".

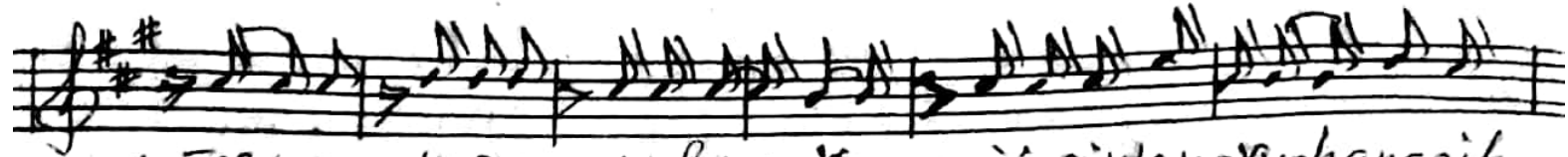
Handwritten musical notation for the second system of the chorus. It continues the vocal line and piano accompaniment. The lyrics are: "zama, ta zama, E Mungu wangu - ta -- wa tu wote wa Dunia hi".

Handwritten musical notation for the third system of the chorus. It continues the vocal line and piano accompaniment. The lyrics are: "i wanavyo hanga - ika uwa ongoze (kati ka) maani sayote, waka".

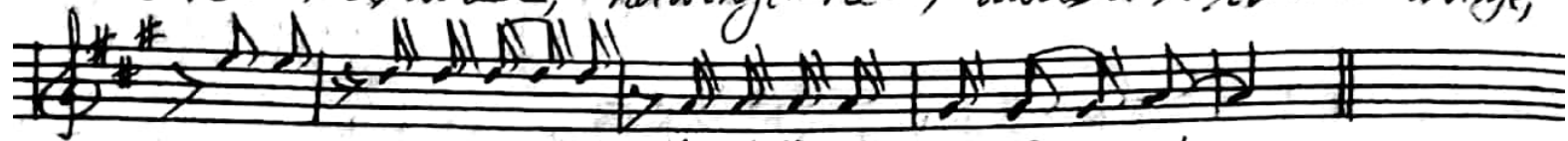
Handwritten musical notation for the fourth system of the chorus. It continues the vocal line and piano accompaniment. The lyrics are: "u miwe - ma - mi, le, le, yo, te." and "u miwe - ma -". There are also some handwritten notes in parentheses: "(Kweeli)" and "(Saa ipi)".



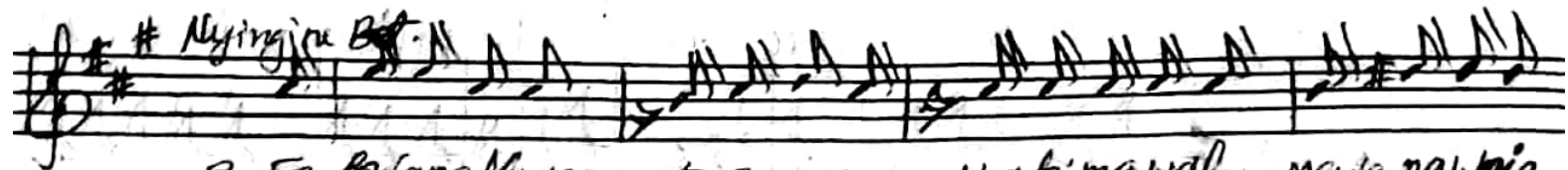
1. Ee Bwana Mungu, tunaomba kiongoze tunia hii. te na,  
 3. 1 1 1 1 1 1, 1 1 1 1, uwasaidie kwa sioji weza,



1. Ee Bwana, tazama, walema - yu - , jinsi wanavyo hangaika,  
 3. Ka - ma, wazee, nawengi - ne - , uwasaidie - wenyewe,



1. Uwa, saidie ei kati kiki la fa - mbo - .  
 3. maisha, mala - ya - , waisi kwa neema zako.



2. Ee Bwana Mungu, tazama, yatima wafu ng'wa nahija



2. ne, ee Bwana, Bwana, ee Bwana, uwasaidie - .