



SHANGWE AMEZALIWA

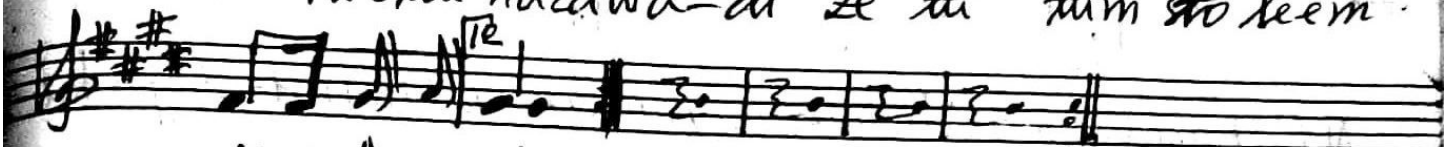
By: IRA. Ma Jules

the 06th of 01/2020.
Camp: Nyarugusu
Kasulu - Kigoma

Mashauri:



1a) Leo yesu ameza li wa, be~~h~~hile hemum
b) ni - yesu mwanawa Mungu, a - me kujaku
2. Twende naza wa - di ze tu tum sto leem



ji waba u di organ. - - - - -

tu - kombo

fa l me we

TAB.



3. M to to ye su - ame zali wa ni E ma nua li

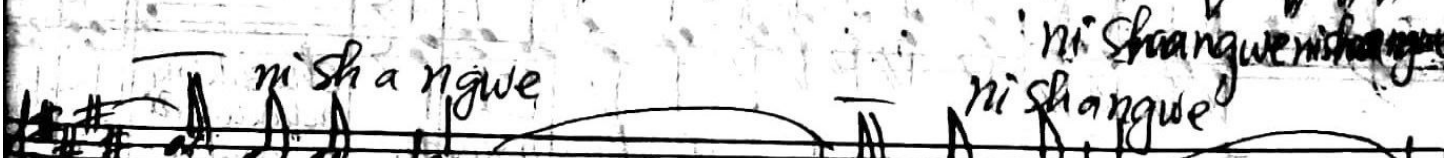


mwako zi wa bu ni. (a)

1. wa

2. tu

kiitiki o: ni sha ngwe
ni sha ngwe
o ho ni sha ngwe ku - lwa ku -



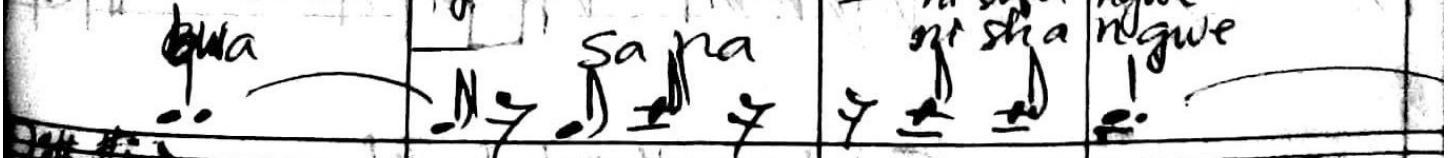
ni sha ngwe

ni sha ngwe



ni sha ngwe

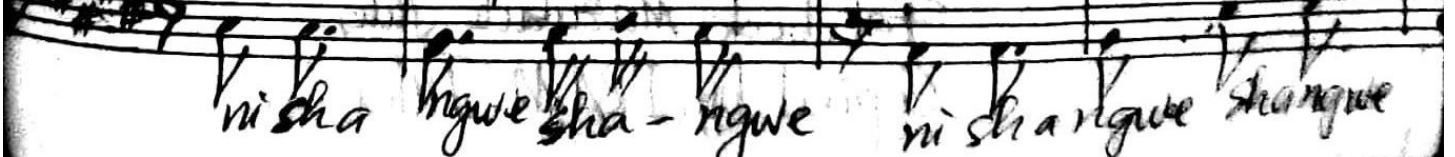
ni sha ngwe



lwa

sana

ni sha ngwe



ni sha ngwe sha - ngwe

ni sha ngwe sha ngwe

ku - lowa lowa
 ku - lowa ohonisha lowa
 ku - lowa lowa
 ku - lowa lowa

N.B: Baada ya shairi hakuna pumziko lakina nda ingia kii
 tikio maramoja
 Kibwagizo:

Leo tuna furaha ku kwasana kwaku amwo kazi wetu
 amezaliwa Tumshangili'e Tumpi'gi e Makofi
 tumpi'gi e vigelegele bua naweta
 chesakingi ndakuani a kwaku tu a mwekwa wetu

Facebook: Mazubate Jules
 Copied by: IRAM. Jules.