

Ee Mungu wangu Mfalme Nitakutukuza.

Zab. 145:8-13

Emmanuel N. Stephano

Meatu/Simiyu

05/05/2022

$\text{♩} = 70$

Musical score for the first system (measures 1-5). The score is in 2/4 time with a key signature of one sharp (F#). The melody is written in the treble clef, and the bass line is in the bass clef. The lyrics are: Ee Mu ngu wa ngu M M fa lme ni ta ku tu ku - za ni ta li hi.

Musical score for the second system (measures 6-11). The score continues in 2/4 time with a key signature of one sharp. The lyrics are: ni ta li hi mi di ni ta li hi mi di ji na la ko ni ta li hi mi di ji na. The melody and bass line are consistent with the first system.

Musical score for the third system (measures 12-14). The score continues in 2/4 time with a key signature of one sharp. The lyrics are: la ko mi le le na mi le le la le. The melody and bass line are consistent with the previous systems.

15



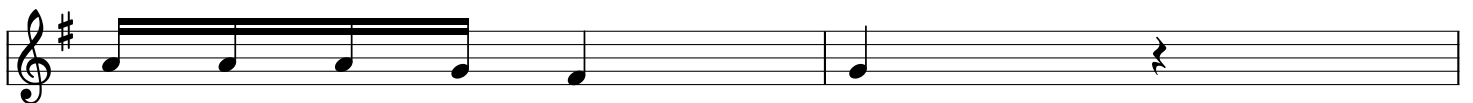
1a. Bwa na a - fa dhi li ni - mwi ngi wa - hu - ru ma
 b. Si mwe pesi wa ha si ra ni - mwi ngi wa - re - he ma
 2a. Bwa na kazi za ko zo te zi - ta - ta - ku-shu ku ru
 b. Na wa - cha - Mu ngu wa - ta - ku - hi - mi di
 3a. I li ku - wa ju li sha wa tu ma te ndo ya ko ma ku u
 b. Na u - tu ku fu wa fa ha ri ya u fa lme wa ke

19



Bwa na ni mwe ma kwa wa - tu wo te na re he ma za ke zi ju u ya -
 wa ta u ne na u tu - ku - fu wa u fa lmewa ko na ku u hadi thia
 u fa lme wa ko ni u - fa - lme wa za ma ni zo te na ma m la ka

25



ka zi za ke zo te
 u we - za wa ko.
 ni vi za zi vyo te.