

EE NAFSI YANGU UMSIFU BWANA

Zab. 146 : 6-10, (K) 1

Shanel Komba
08.05.2014
Dar es Salaam

Wimbo wa katikati
Jumapili ya 26 Mwaka C

Ee na - fsi ya - - ngu u - m - si - fu Bwa-na Bwa-na
(na - fsi ya - ngu) (na - fsi)

u - m - si - fu Bwa-na u - m - si - fu, Ee na - fsi
(m - si - fu)

ya - ngu u - m - si - fu Bwa - na Ee na - fsi

ya - ngu u - m - si - fu Bwa na Bwa na
na - fsi

1. Bwana hu-i-shi-ka kwe-li mi - le-le, hu-wa-fa-nyi - a hu-ku-mu wa-li-o-o - ne-wa

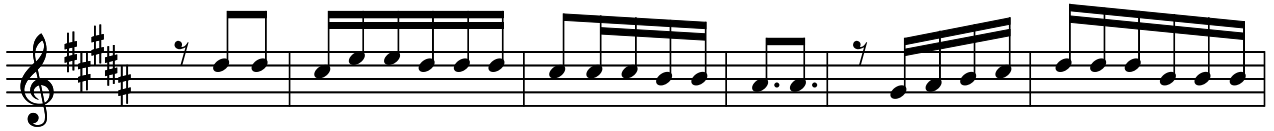
1. hu-wa - pa we-nye nja - a cha ku-la Bwana hu-wa-fu-ngu-a wa-li-o - - fungwa.



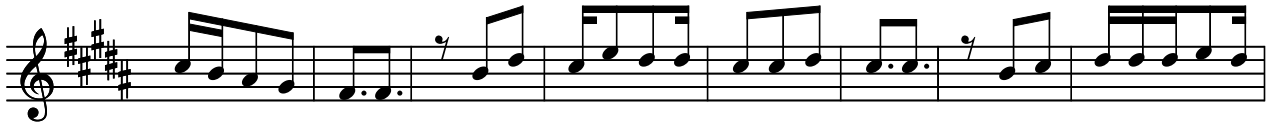
2. Hu-wa - fumbua macho wa-li - o-po - fu-ka, Bwana huwa - i-nu-a wa - li - o - i



2. na-ma, Bwana hu-wa-pe-nda we-nye ha-ki, Bwana hu-wa-hi - fa-dhi wa - ge-ni



3. Bwana hu-wa-te-ge-me-za ya-ti-ma na m - ja-ne, Ba-li nji-a ya wa-si - o ha-ki



3. hu - i-po - to-sha, Bwana a - ta-mi - li - ki mi - le-le, Mungu wa-ko Sa-yu-ni



3. ki-za-zi na ki - za-zi.