

EE BWANA NAKUINULIA

Zab. 25: 4-5, 8-9, 10, 14

N. KINGA

19-11-2021

Singida

Mwanzo & katikati
Dom 1 Majilio "C"

S
A

Ee Bwa na naku i nu li a na fsi ya ngu Ee Bwa

T
B

6

na naku i nu li a na fsi ya ngu na ku i nu li a

11

na - fsi ya ngu ya ngu.

14

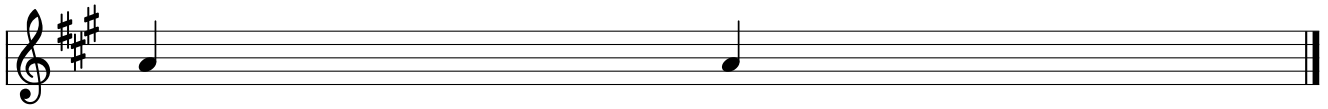
1.Ee Bwa na u ni ju li she nji a za ko u ni fundi she ma

18



pi to ya ko u ni ongo ze ka ti kakweli ya ko na ku ni fu

22



ndi sha.

23



2.Bwa na yu mwe ma mwe nye a di li kwa hi yo a tawafu

27



ndi sha we nye dhambi nji a we nye u po le a tawa o

31



ngo za ka ti ka hu ku mu we nye u po le a ta

35



wa fu ndi sha nji a ya ke.

38



3.Nji a zo te zaBwana ni fa dhi li na kwe li kwao wa

42



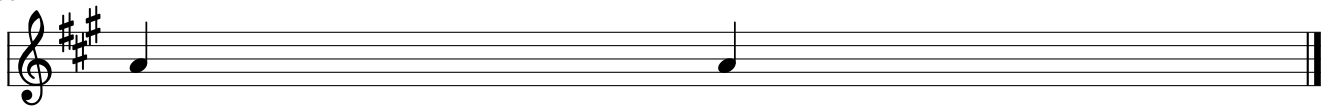
li shikao a ga no la kena shu hudaza ke si ri yaBwana i ko

46



kwao wa mcha o naye a ta wa - ju li sha a - ga no

50



la ke.