

JUBILEI SHANGWE

N. KINGA
Kinyagigi-Singida

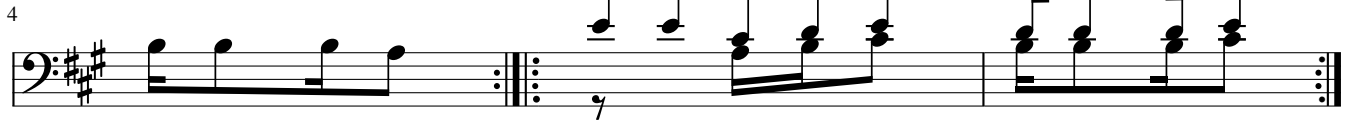
0621-958295/0753-958295

29-07-2022

1.(a)Tuna yo sa ba bu ya ku ku shu ku ru mwe
(b)Kwa ju bi le i ya mi a ka ha m si ni



nye zi Mu ngu (a)Ha ya so te tu fu ra hi e
ya - ji - mbo (b)Te na tu i sha ngi li e e



Kitikio

7

Jubi le i Ji mbola Singi da tu i sha ngili e Jubi le i

12

sha - ngwe Ju bi le i sha ngwe ya Mi a ka ha

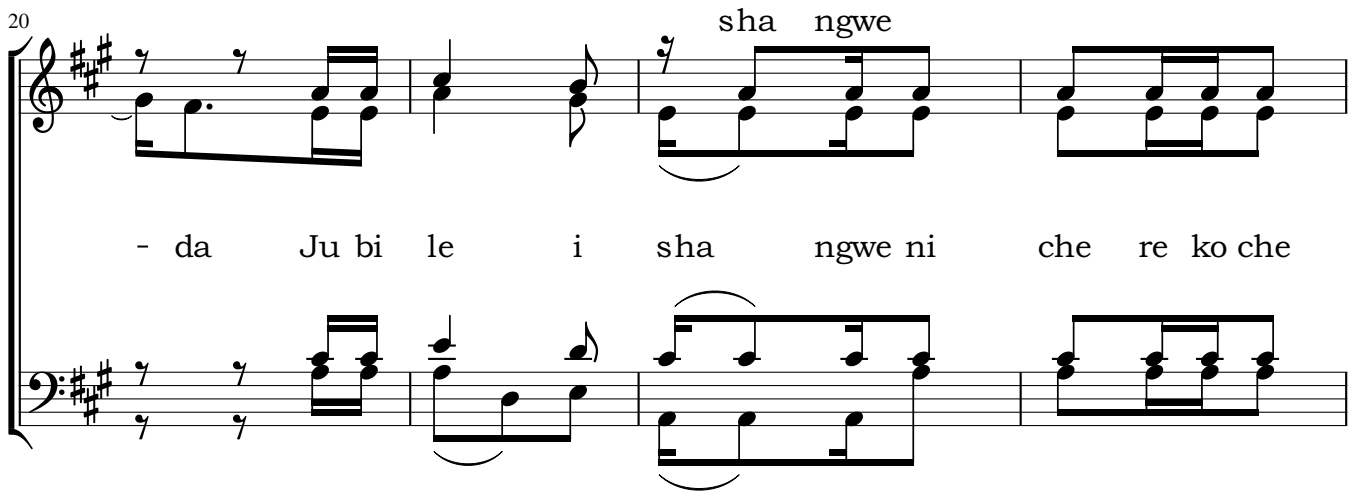
16



sha ngwe

m si ni Ju bi le i sha ngwe Ji mbola si ngi -

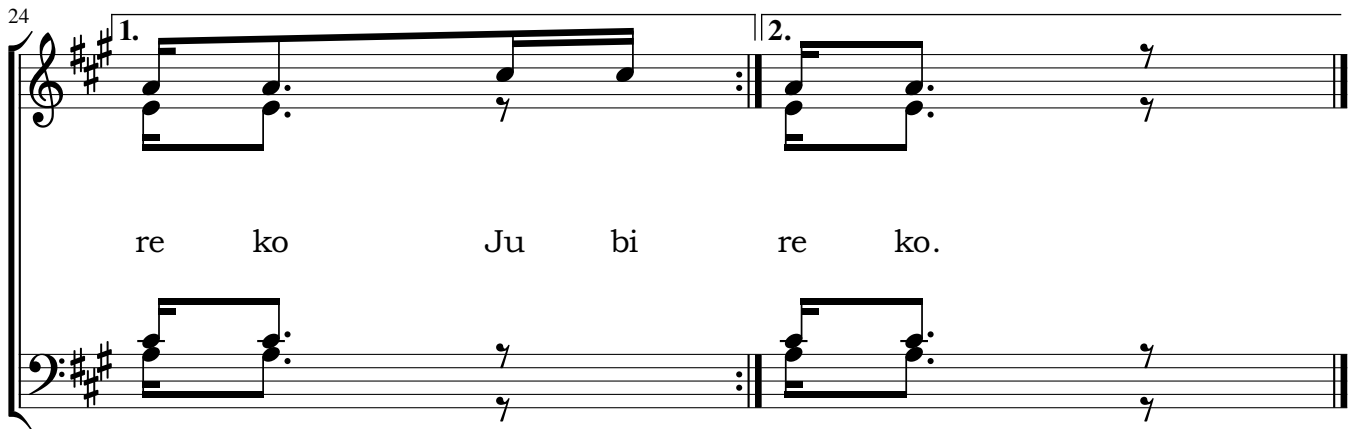
20



sha ngwe

- da Ju bi le i sha ngwe ni che re ko che

24



1. 2.

re ko Ju bi re ko.

2. (a) Mwanga wake Yesu Kristo uangaze jimboni mwetu,
(b) Uangaze ufahamu tutambue wema wa Mungu, (Haya sote.....)
3. (a) Jimbo letu sasa linaongezeka kwa waamini,
(b) Parokia nazo zinaongezeka vigango pia (Haya sote tufurahie...)