

MDOGO KATI YENU.

Music by Damas J
Tunduma Parish
Composed on April 2022.

♩ = 65

Mi mi ni li yem do go ni me i ti ka wi to ni we M tu mi shi wenu ka ti ya Wa tu

Detailed description: This system contains the first seven measures of the piece. It features a treble and bass staff in 2/4 time. The melody is primarily eighth-note based. The lyrics are: 'Mi mi ni li yem do go ni me i ti ka wi to ni we M tu mi shi wenu ka ti ya Wa tu'. There are rests in the melody for the words 'ni me' and 'to ni we'.

8

1. 2.

mi shi mi shi. O R G A N ni o ngo ze ve ma Mungu wa ngu ni kaya te nde ya li yo

Detailed description: This system contains measures 8 through 14. It includes first and second endings. The lyrics are: 'mi shi mi shi. O R G A N ni o ngo ze ve ma Mungu wa ngu ni kaya te nde ya li yo'. The word 'ni' is written above the 'ni' in 'ni o ngo'.

15

ni kau

1. 2.

ma i shi U - ta ka ti fu Mi le le na Mi le le. ni ka ya le le.

me

ti fu Mi

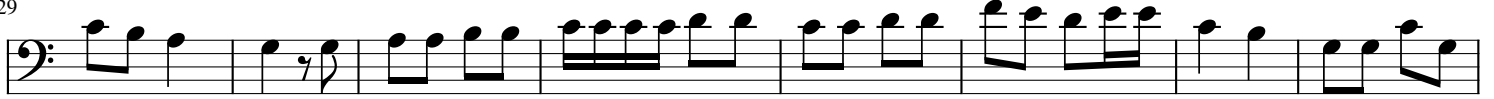
Detailed description: This system contains measures 15 through 21. It includes first and second endings. The lyrics are: 'ma i shi U - ta ka ti fu Mi le le na Mi le le. ni ka ya le le.' and 'me' on the line below. The word 'ni' is written above the 'ni' in 'ni kau'.

21



1. Ee - eBwa na ni imari she ka tika ima ni ni dumu ka ti ka kuku tumi ki a Mungu wa ngu.

29



2. Niwachu nge ko ndo o wa ko ka ti kanji a i fa a yo wa ku ju e waku pe nde wa ku tu mi

37



ki e i li wa fi kekwa ko mbingu ni wa ki ki i mba naku si fumi le le na mala i ka

44



na wa ta ka ti fu wo te mi le le na mi - le le