

# WAUFUMBUA MKONO WAKO

FABIANO MICHAEL JOSEPH

Mt. Cecilia Mfia Dini

UDOM-CHSS

17 July 2021

$\text{♩} = 60$

*mf*

Wa u fu mbu a m ko no wa ko

*mf*

Detailed description: This system contains the first two measures of the piece. It is written in 4/4 time with a tempo of 60 beats per minute. The music is in a major key. The melody is in the right hand, and the accompaniment is in the left hand. The lyrics are 'Wa u fu mbu a m ko no wa ko'. The dynamic marking is mezzo-forte (mf).

3 wa ki shi bi sha ki li cho ha i ki li cho ha i

*mp* *f*

*mp* *f*

Detailed description: This system contains measures 3 through 5. Measure 3 starts with a mezzo-piano (mp) dynamic. Measure 4 has a half note with a sharp sign (F#) in the right hand. Measure 5 starts with a forte (f) dynamic. The lyrics are 'wa ki shi bi sha ki li cho ha i ki li cho ha i'. The dynamic markings are mezzo-piano (mp) and forte (f).

6 ma ta kwa ya ke.

Detailed description: This system contains measures 6 through 8. Measure 6 starts with a mezzo-piano (mp) dynamic. The lyrics are 'ma ta kwa ya ke.'. The dynamic marking is mezzo-piano (mp).

7



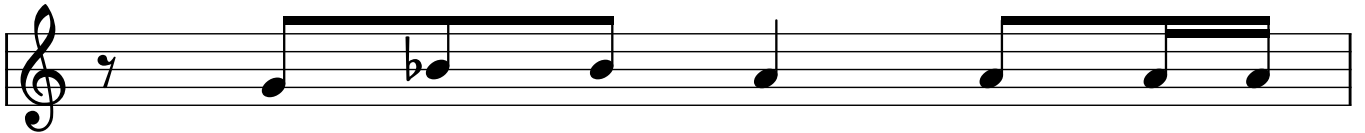
1.Ee Bwa na ka zi za ko zo te zi ta ku shu ku ru  
 2.Ma cho ya wa tu - ya ku e le ke a we we  
 3.Bwa na ni mwenye ha - ki ka ti kanjiazake zo te

9



na wa cha Mu ngu wa ko wa ta ku hi mi di  
 na we hu wapa cha ku la cha o wa kati wa ke  
 na mwe nye fadhi li ju u ya ka zi zake zo te

11



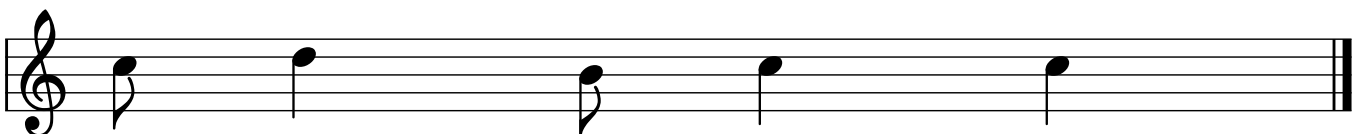
wa ta u ne na u tu  
 wa u fu mbu a mko no  
 Bwa na yu ka ri bu na

12



ku fu wa u fa - lme wa ko na ku u ha di thi a  
 wa - ko wa ki - shi bi sha ki - li cho ha i  
 wo - te - wa - mwi ta o wo te wa mwi ta o kwa

14



u we za wa ko.  
 ma ta kwa ya ke.  
 u a mi ni fu.