

IWENI NA HURUMA

By Yuda Edward

{Msality}

Kigoma Kamara

S
A

I we ni na hu ru ma na u po le

m ki chu ku li a
m ki chu ku li a
m ki chu ku li

T
B

m ki chu ku li

Detailed description: This block contains the first five measures of the song. It features two vocal parts (Soprano/Alto and Tenor/Bass) and piano accompaniment. The key signature is three sharps (F#, C#, G#) and the time signature is 2/4. The lyrics are: 'I we ni na hu ru ma na u po le' followed by 'm ki chu ku li a'.

6

na ka ti ka ki la ja mbo kwa ku wa ndi -

na ka ti ka ki la ja mbo kwa ku wa ndi yo

a na ka ti ka ki la ja mbo kwa ku wa ndi - yo

a na ka ti ka ki la ja mbo kwa ku wa ndi - yo

Detailed description: This block contains measures 6 through 8. The lyrics continue: 'na ka ti ka ki la ja mbo kwa ku wa ndi -' and 'na ka ti ka ki la ja mbo kwa ku wa ndi yo'. The piano accompaniment continues with a consistent rhythmic pattern.

9

yo ma fu ndi sho na ma hu bi ri ya Mu ngu

ndi yo ma - fu - ndi - sho na ma hu bi ri ya Mu ngu

ndi yo

ndi yo ma fu ndi sho - na ma hu bi ri ya Mu

Detailed description: This block contains the final four measures (9-12) of the song. The lyrics are: 'yo ma fu ndi sho na ma hu bi ri ya Mu ngu' and 'ndi yo ma - fu - ndi - sho na ma hu bi ri ya Mu ngu'. The piano accompaniment concludes with sustained chords.

15 we - tu wa mbingu ni ta ngu vi za zi na vi za zi.

we tu mbingu ni ngu vi za zi na vi za zi.

we tu mbingu ni vi za zi na vi za - zi

we tu mbingu ni vi za zi na vi za zi.

20 tu i shi

tu i shi

EeBwa na Ye su twa ku o mba
U tu we ze she si ku zo te

tu i shi

tu i ku ku pe shi nde za.

25 ka ti ka ka ku ku pe nde za.

ka ti ka ka ku ku pe nde za.

ka ti ka - ku ku pe nde za.

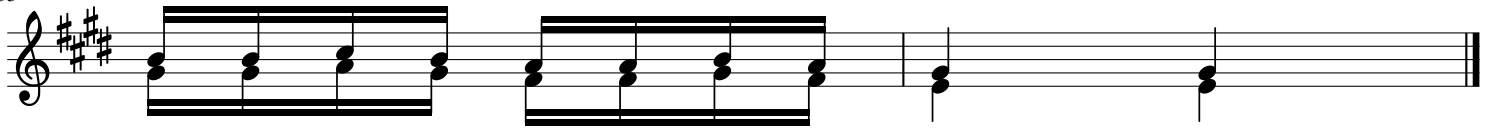
ka ti ka - ku ku pe nde za.

30

1. Tena u tu o ndo le e hi ma ma wa zo yo te ya le ma ba ya a mba yo ha - yo

2. Tena ba do u tu o ndo le e mo yo wa ki sa si kwa we nze tu a mba vyo hi - vyo

35



ya we za ku wa cha nzo cha dha mbi.
twa ku wa ba do twa te nda dha dha mbi.