

# OLE WAO WACHUNGAJI.

Yeremia 23:1-4;Ezekieli 34:4.

*Kanuti Mshauri.  
Luhanga parish DSM.*

Changamka.



O-le wa-o wa-chu-nga-ji, wa-na-o ha-ri-bu ko-ndo-o za ma - li-sho ya-nгу, na ku - wa-ta-wa-nya

8



a-se-ma Bwa-na. Kwa sa-ba-bu hi-yo Bwa-na Mu-ngu wa I-sra - e-li a-se-ma hi-vi,a-se-ma

15



hi - vi: Ju - u ya wa-chu-nga-ji wa - na-o-wa - li-sha wa-tu wa-nгу, M-me - ta-wa-nya ku-ndi

22



la-ngu na ku-wa-fu -ku-za, wa-la ha-m-kwe-nda ku-wa-ta - za-ma.

28

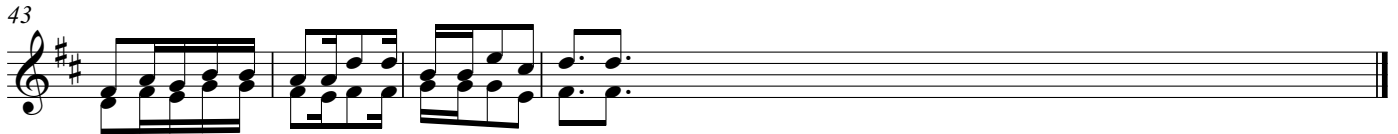


1.A - nga-li-e-ni ni - ta-wa-pa-ti - li-za u-o-vu wa ma-te-ndo ye-nу a-se-ma Bwa-na, na-mi ni-ta -

36



ku\_ sa-nya ma-ba-kiya ku-ndi la-ngu, ka-ti-ka n-chi zi-le zo-te ni-li-zo-wa-fu - ku-za,



na-mi ni-ta-wa - le-ta te-na ma-zi-zi-ni mwa-o.



2.Na - o wa-ta - za - a, wa-ta - za-a na ku-o-nge - ze-ka, a - se - ma Bwa-na. Na-mi ni - ta - we-ka ju - u



ya-o wa-chu-nga-ji wa-ta-ka-o wa - li-sha, wa-la ha-wa-ta - o-na ho-fu te-na, wa-la ku-fa-dha - i-ka,



wa-la ha-ta-po - te-a ha-ta m-mo-ja wa-o a-se-ma Bwa-na.



3.Wa - go-njwa ha-m-ku-wa - ti-a ngu-vu, wa-la ha-m - ku-wa-po-nya we-nye ma - ra-dhi, wa-la ha-m-ku-wa



fu nga, wa-li-o - vu-nji-ka, wa-la ha-m-ku-wa - ru-di-sha, wa-li-o - fu-ku-zwa,

wa-la ha-m - ku-wa-ta-fu - ta wa-li-o-po - te - a, ba-li kwa-ngu - vu na kwa u - ka-li m - me-wa - ta-wa-la.