

POKEENI FURAHA

Thobias G. Littimba
Litembo Parish
MBINGA
09.04.2015

Con Motto

JP 2 PASAKA (MWANZO)

1. nu nu

2. nu

Po ke e ni Fu ra ha ya U ttu ku fu we

Detailed description: This system contains the first five measures of the piece. It features a piano accompaniment with a treble and bass clef, and a vocal line. The key signature has two sharps (F# and C#), and the time signature is 2/4. The lyrics are: 'Po ke e ni Fu ra ha ya U ttu ku fu we nu nu'. The first ending (1.) ends with a repeat sign and a fermata over the final note, while the second ending (2.) provides an alternative resolution.

6 Mshu ku ru ni Mu ngu a li ye wa i - ta Kwa U fa lme

Detailed description: This system contains measures 6 through 10. The piano accompaniment continues with a steady eighth-note pattern. The lyrics are: 'Mshu ku ru ni Mu ngu a li ye wa i - ta Kwa U fa lme'. The vocal line has a fermata over the word 'i' in 'iyewaita'.

11 wa ke wa Mb ngu ni A le lu - ya.

Detailed description: This system contains measures 11 through 13. The piano accompaniment continues. The lyrics are: 'wa ke wa Mb ngu ni A le lu - ya.'. The vocal line has a fermata over the word 'lu' in 'Aleluya'.

14

Detailed description: This system contains measure 14, which is a single melodic line for the vocal part. It begins with a fermata over the first note.

1.Mshu ku ru ni Bwa na kwa - ku wa ni Mwe ma
Kwa ma a na fa dhi li - za ke za mi le le

2.Mla ngo wa Ha ru ni na wa se me - sa sa
Ya kwa mba fa dhi li za ke ni za mi le le

3.U li ni si ku ma sa na i li ni a ngu ke
la - ki - ni - Bwa na ka ni sa i di a

2

16

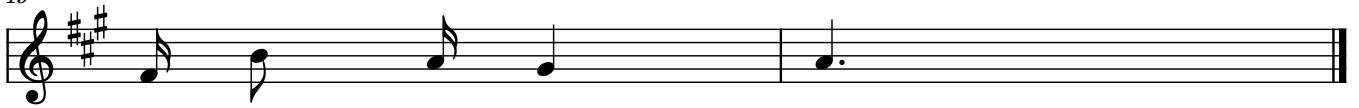


1.na ase me sa sa sa ya kwa mba fa dhi li za ke ni za Mi le le

2.Bwa na na wa se me ya kwa mba fa dhi li za ke ni za mi le le

3.na - wi mbo wa ngu na ye a me ku wa wo - ko - vu wa ngu

19



1.ni za mi le le.

2.ni za mi le le.

3.wo ko vu wa ngu.