



NI MWISANGE

Paisi J. R. SM
Le 10/20/2022
Choral: Voice Celeste
Internat: Kiremba

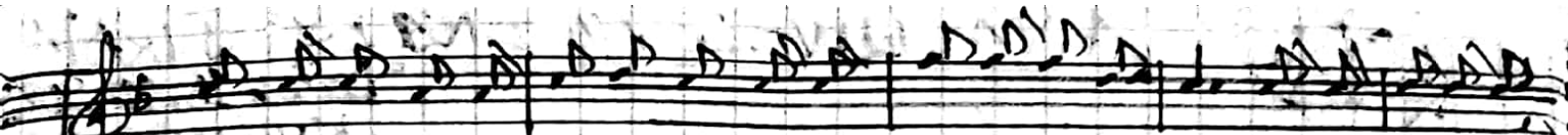
2/4 Kaze kaze-e mwe mwabashiri mu umu ryango

bya-ya bya Cu umu- sange ku- ko muje mu mu ryango

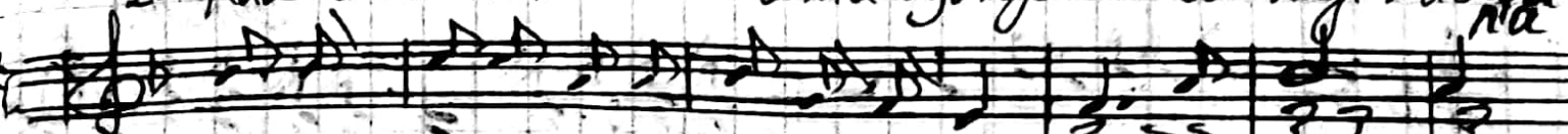
omwiza Ka - (Kahiri ndu (Kandi) uzo ba-ja-sha

Lo Kaze bagenzi turubake umu ryango wa Cu mugu

Lo tanga i ryi yu muiro bitandu ka-nye



2. Kaze dukome ze - - umu oyango-wacu Kugi r'ubera ^{na}



2. ~~Kana~~ rerebandi bantu - bo

$\frac{2}{2}$	$\frac{2}{2}$	$\frac{2}{2}$	$\frac{2}{2}$
se	I	ma	na
$\frac{2}{2}$	$\frac{2}{2}$	$\frac{2}{2}$	$\frac{2}{2}$



I ma-na



na yo i zobi ni kumwe, na twe.

