

EE BWANA FADHILI ZAKO ZIKAE NASI

Zab:33:4-5, 18-20 , (K) 22

Thobias G. Litimba
St. Theresa Choir
Hanga Monastery
Songea
27.02.2006
0763592502/0654643602

K a t i k a t i
Dom.2 Kwaresma (A)
Dom.5 Pasaka (A)
Moderato

Ee Bwa na Fa dhi li za ko zi ka e Na si

5 Fine

Ka ma vi le tu li vyo ku ngo ja we we.

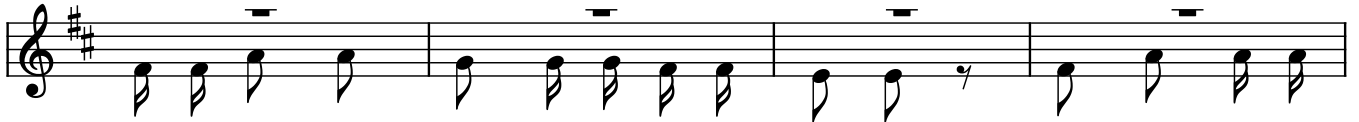
9

1. Kwa ku wa Ne no la ke Bwa na li na - a = di li, Na ka zi ya ke yo te

15

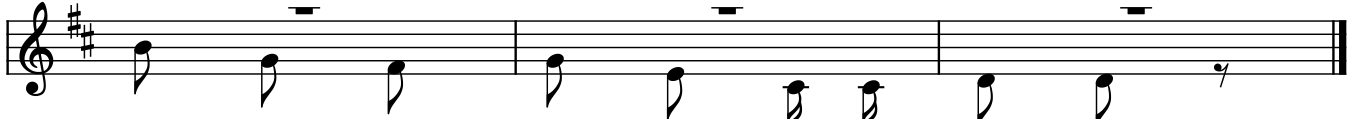
hu i te nda kwa u a mi ni fu.

19



2. Hu zi pe nda ha ki - na hu ku mu, N chi i me
5. Na fsi ze tu zi na m ngo ja Bwa na Ye ye ndi ye

23



2. ja a fa dhi li za - Bwa na,
5. Msa a da we tu na nga o.

26



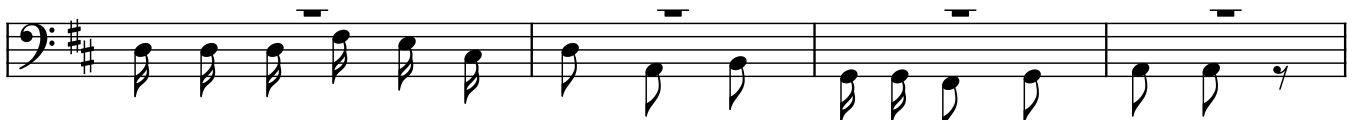
3. Ta za ma ji cho la ke Bwa na li kwa o wa m cha o

30



Wa zi ngo je a o fa dhi li za ko.

34



4. Ye ye hu wa po nya Na fsi za o - na ma u ti,

38

na ku - wa hu i sha wa ka ti wa nja a.

The image shows a single line of musical notation in bass clef with a key signature of one sharp (F#). The melody consists of eighth and quarter notes. The lyrics are written below the notes: 'na ku - wa hu i sha wa ka ti wa nja a.' There are four horizontal bars above the notes, each spanning two notes.