


# MSAADA WANGU U KATIKA BWANA

Wimbo wa katikati Dom ya 29 mwaka 'C'  
Zab 121 (K) 2

Revocatus Malale  
22.11.2022  
Shinyanga.

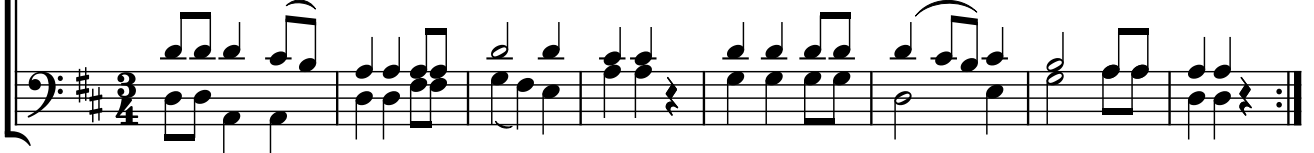
*Moderato*

S  
A



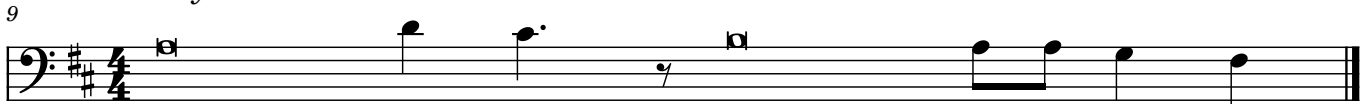
M sa a da\_ wangu uka ti\_ ka Bwana; a li ye zi fa\_ nya mbi\_ngu na n chi.

T  
B



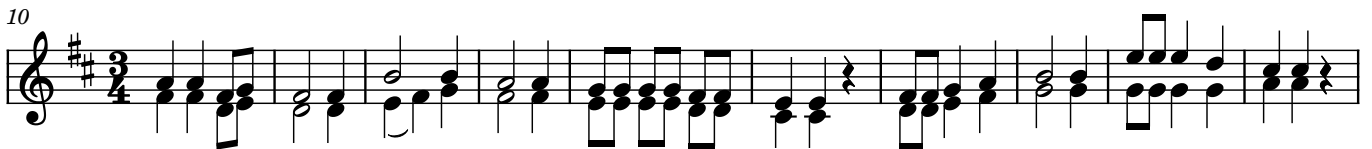
*Namna ya kwanza.*

9



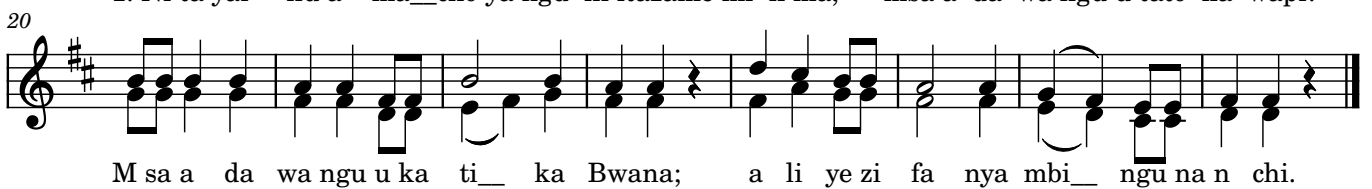
*Namna ya pili*

10



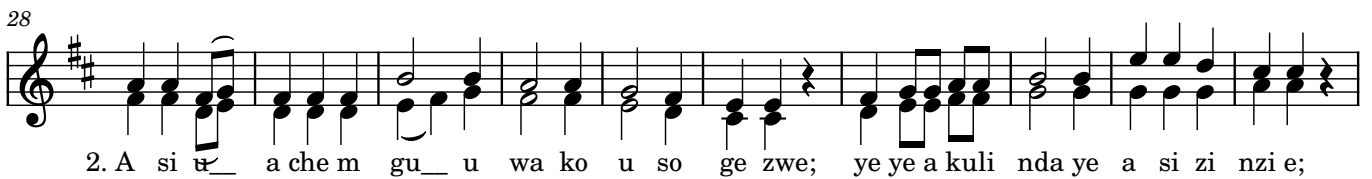
1. Ni ta yai nu a ma\_ cho ya ngu ni itazame mi li ma, msa a da wa ngu u tato ka wapi?

20



M sa a da wa ngu u ka ti\_ ka Bwana; a li ye zi fa nya mbi\_ ngu na n chi.

28



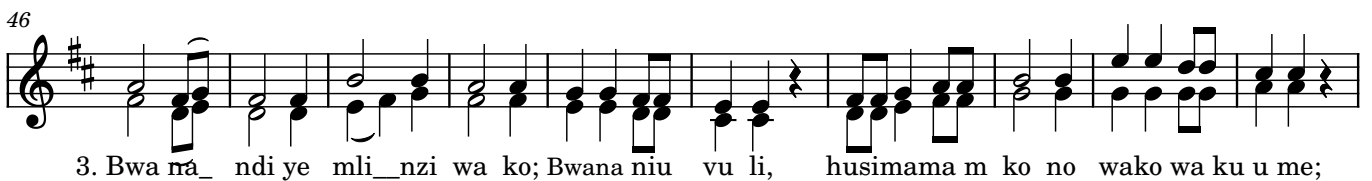
2. A si a\_ che m gu\_ u wa ko u so ge zwe; ye ye a kuli nda ye a si zi nzi e;

38



Naam, hatasi nzi a wala ha ta lala u si ngizi; ye ye a li ye m li nzi wa I sra e li.

46



3. Bwa na\_ ndi ye mli\_ nzi wa ko; Bwana niu vu li, husimama m ko no wako wa ku u me;

56



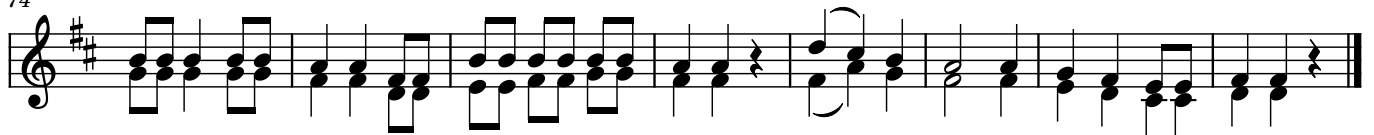
Ju a ha li taku pi ga m cha na; wa\_ la mwezi wa ka ti wa u si ku.

64



4. Bwana a taku li nda a ta ku li nda na ma ba ya; a ta ku li nda na fsi ya ko;

74



Bwana a ta ku li nda u to kapo na u i ngi a po; ta\_\_ ngu sa sa na ha ta mi le le.