

**BWANA NA BIBI HARUSI WANAPENDEZA**

AMOS EDWARD

24/09/2022

Mofu-Ihenga

Adante..."

S  
A

Bwana ha ru si na Bi bi ha ru si wa na pe nde za wo te

T  
B

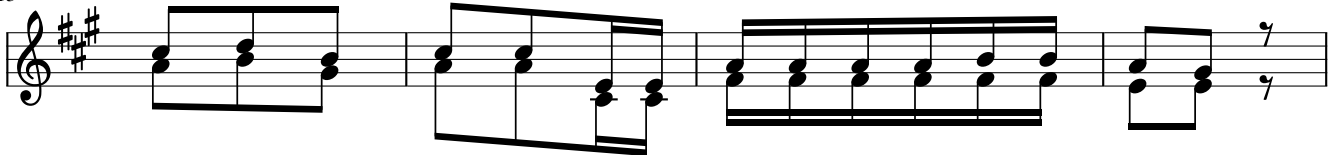
5

wa na pe nde za Njo ni tu wa sha ngi li e na

9

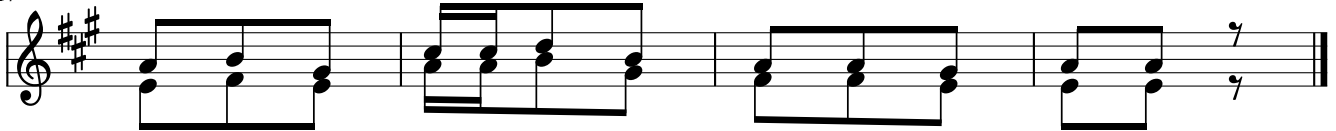
tu wa o mbe e kwa Mu ngu

13



1. I ka we he ri si ku zo te za ma i sha ye nu  
 2. Ma i sha ye nu ya ka we na Ba - ra ka zo te

17



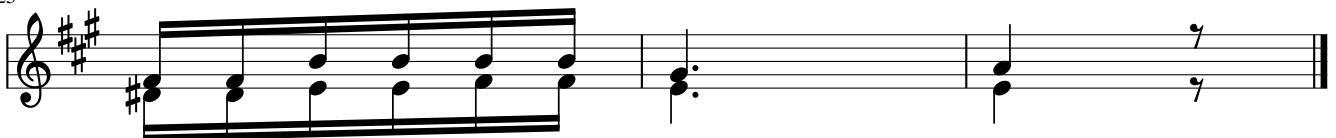
mu i shi m ka i shi kwa u pe ndo.  
 M pe ni m ka m pe Mu ngu na fa si.

21



3. M li yo ya a hi di Mbe le ya Mu ngu Ba ba  
 4. Muwa tu nze wa to to kwa - mi si ngi Bo ra

25



M ka ya - ti - mi ze.  
 hi yo ndi yo fa mi li a.