

# EKARISTI NI CHAKULA BORA

Mogha AA  
Shybush-Mwadui  
12/6/2022

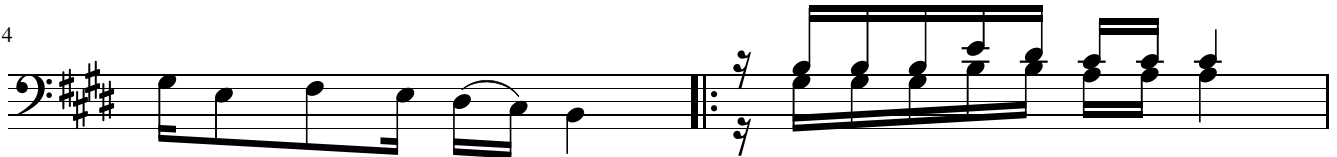
$\text{♩} = 68$

Moderato



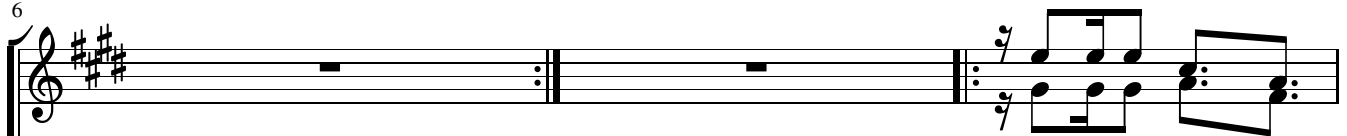
1. E ka ri sti ni cha - ku la bo - ra, E ka ri sti ni cha  
2. Le o Kri sto a tu o mbe a kwa Mu ngu, sa la ze tu a -  
3. Mwi li wa Ye su ni cha kuu la che - tu, da muya ke ni ki

4

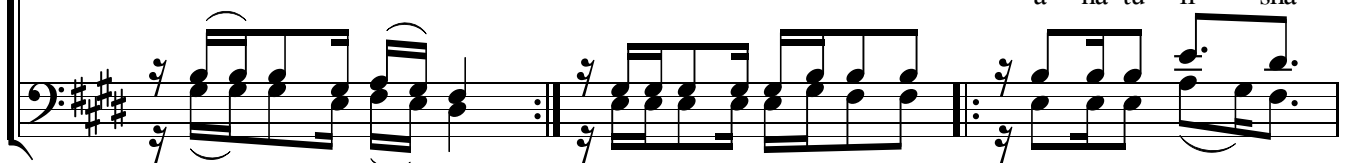


ku la cha u zi - ma E ka ri sti ni cha ku la  
pe le ka kwa Ba - ba na - si tu m to le e  
nywa ji cha u zi - ma Ro ho ya ke ni u zi ma

6

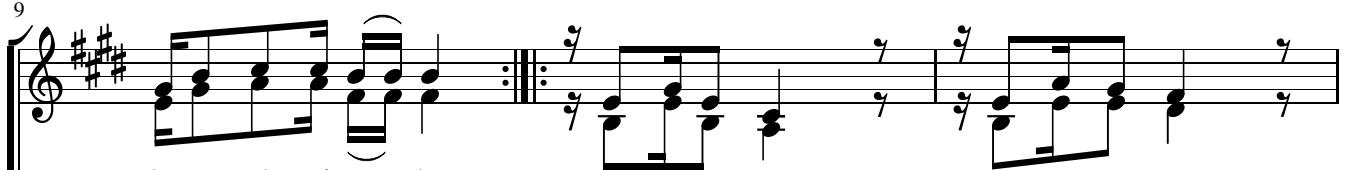


Ye su Kri sto a  
a na tu li sha

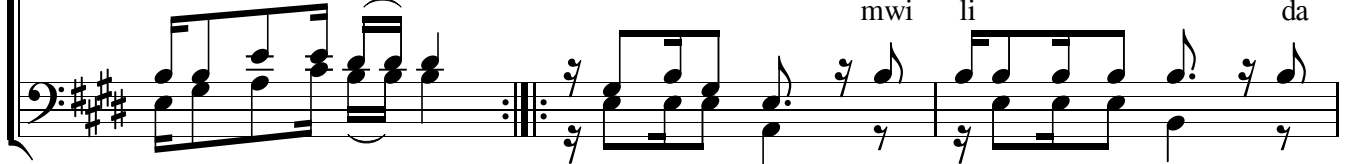


cha u zi ma we - tu. tu li si fu fumbo hi li  
shu - kra ni ze - tu tu li si fu fumbo hi li  
ni u zi ma we - tu tu li si fu fumbo hi li

9



ka a nda ni ya - ke a tu li sha mwi li tu nywe sha da  
na ku tu shi bi - sha



mu a tu shi bi sha mwi li wa ke na da mu ya ke.

The image shows a musical score for a voice and piano piece. It consists of two staves: a vocal line in the treble clef and a piano accompaniment in the bass clef. The key signature is three sharps (F#, C#, G#), and the time signature is 3/4. The lyrics are written below the vocal line. The piano accompaniment features a steady eighth-note bass line and chords in the right hand. The piece concludes with a double bar line and repeat dots.