

NI SHANGWE TUFURAHII

Noeli

Peter Jihango(PJ)

Dodoma cathedral

2022

$\text{♩} = \text{Majestically}$

S
A

Ni sha ngwetu fu ra hi (sa na) Ni sha ngwe tu sha ngi li e (so te)

T
B

Musical notation for Soprano and Alto parts, measures 1-4. The Soprano part is in the treble clef and the Alto part is in the bass clef. The music is in 2/4 time with a key signature of two sharps (F# and C#). The lyrics are: Ni sha ngwetu fu ra hi (sa na) Ni sha ngwe tu sha ngi li e (so te). There are fermatas over the notes 'na' and 'te'.

5

Tu na po a dhi mi sha ku za li wa Ye su Kri sto

Musical notation for Soprano and Alto parts, measures 5-8. The Soprano part is in the treble clef and the Alto part is in the bass clef. The music is in 2/4 time with a key signature of two sharps. The lyrics are: Tu na po a dhi mi sha ku za li wa Ye su Kri sto. There are fermatas over the notes 'sto' and 'sto'.

9

Le o a me za li wa (ku le) Pa ngo ni Be thle he mu

Musical notation for Soprano and Alto parts, measures 9-12. The Soprano part is in the treble clef and the Alto part is in the bass clef. The music is in 2/4 time with a key signature of two sharps. The lyrics are: Le o a me za li wa (ku le) Pa ngo ni Be thle he mu. There are fermatas over the notes 'le' and 'mu'. The lyrics '(ye ye)' are written below the bass line.

(ye ye)

13

Ndi ye M fa lme Bwa na Mko mbo zi wa du ni a

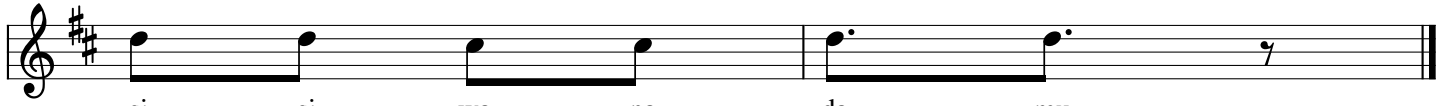
Musical notation for Soprano and Alto parts, measures 13-16. The Soprano part is in the treble clef and the Alto part is in the bass clef. The music is in 2/4 time with a key signature of two sharps. The lyrics are: Ndi ye M fa lme Bwa na Mko mbo zi wa du ni a. There are fermatas over the notes 'a' and 'a'.

17



1.Njo ni tu sha ngi li e Ku za li wa kwa Bwa na A meku ja ku tu kombo a
 2.A meza li wa Bwa na a je ku tu ko mbo a Ni m ko mbo zi we tu njo ni
 3.Ngu vu na o u we za u pokwa ke mi le le ha ta vi za zi vyo te wa ta

23



si si wa na da mu
 tu fu ra hi wo te
 mwi ta mba ri ki wa