

VITA VYA KIROHO!

BY. Anthony E. Kiatu
Sumbawanga Mjini
Oct 12/ 2019

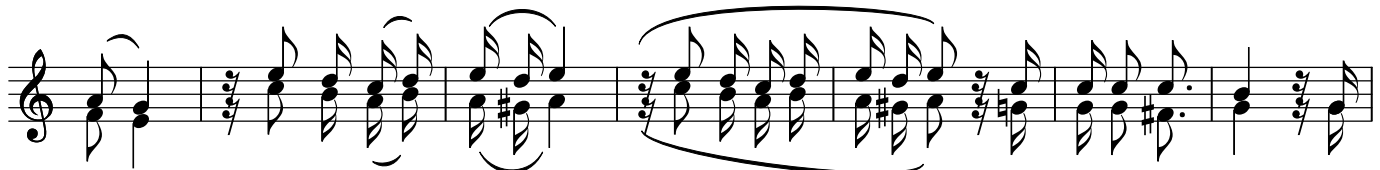
Alegro Moderato



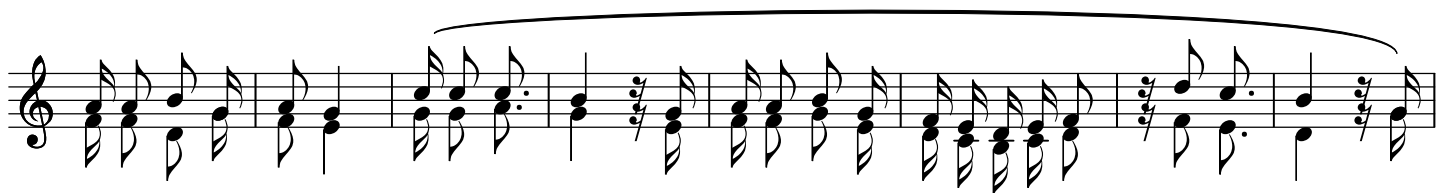
1. Na fsi i na pi ga na na Ro ho Mwi li we nye ta ma a u na pi ga na na Mo yo
2. Na fsi i na ku vu ta u e nde kwe nye ma mbo ya a na sa la ki ni Ro ho wa ko
3. Ba si na se ma twe nde kwa Ro ho wa la ha tu to zi ti mi za ta ma a za mwi li



1. Ha ta u si we ze ku fa nya u na cho ta ka o r ga n f re e - - - - -
2. A na ku sha u ri u fa te ma pi to ya ke o f ga n f re e - - - - -
3. I li tu ya tu nze ma o nyo ya Mu ngu we tu o r ga n f re e - - - - -



1. or gan Mwo mbe Mu ngu or ga n - - f re e* A ku o ngo ze ku
2. or gan Mwo mbe Mu ngu or ga n - - f re e* A ku o ngo ze ku
3. or gan Mi to ya ba ra ka or ga n - - f re e* I ti ri ri ke ka



1. te nda ya lo me ma. or ga n fre e - - - - -
2. te nda ya lo me ma. or ga n fre e - - - - -
3. ti ka na fsi ze tu. or ga n fre e - - - - -

VITA VYA KIROHO!

Chorus

or ga n - - - - - * Vi ta vya ki ro ho u li mwe ngu wa Ro ho Ma pa mba
or ga n - - - - - *

no ya ngu vu za gi za na Ro ho Mta ka ti fu ku na ma pi ga no Ro ho M ta ka ti fu

a na tu o ngo za La ki ni Ro ho ya u o vu i na pi ga na ku tu to a

kwe nye nji a za ko mwo ko zi wa ma i sha ye tu la ki ni ba do u na tu li nda ve ma

FINE

**O
R
G
A
N
P
A
U
S
E**

VITA VYA KIROHO!

HITIMISHO.

Si fa si fa kwa ko m fa ri ji Ro ho Ro ho M ta ka ti fu A sa nte kwa

The first system of the hymn features a piano accompaniment with a treble and bass clef. The melody is written in the treble clef, and the lyrics are placed below the notes. The music is in a 4/4 time signature and consists of 12 measures.

ku tu pi ga ni a A sa nte kwa ku tu o ngo za ve ma ku na mi

The second system continues the piano accompaniment and melody. It consists of 12 measures, with the lyrics placed below the notes.

li ma na ma bo nde bi la we we tu si nge we za Ku e pu ka u a she ra ti u cha fu na u

The third system continues the piano accompaniment and melody. It consists of 12 measures, with the lyrics placed below the notes.

fi sa di Na ma mbo ya na yo fa na na na ha yo yo te - te - -

The fourth system concludes the hymn with a first and second ending. The first ending leads back to the beginning of the piece, and the second ending provides a final resolution. The system consists of 12 measures.

VITA VYA KIROHO!

A sa nte A sa nte Bwa na twa shu ku ru A sa nte

A sa nte Bwa na ru

M
W
I
S
H
O

WAGALATIA 5: 19-21.

Basi matendo ya mwili ni dhahiri, ndiyo haya, uasherati, uchafu, ufisadi, ibada ya sanamu, uchawi, uadui, ugomvi, wivu, hasira, fitina, faraka, uzushi, husuda, ulevi, ulafi, na mambo yanayofanana na hayo, Katika hayo nawaambia mapema, kama nilivyokwisha kuwaambia ya kwamba watu watendao mambo ya jinsi hiyo hawataurithi ufalme wa Mungu:!