

MISA YA MTAKATIFU YOHANE MWINJILISTI



Misa Ya Mt Yohane Mwinjilisti

Kyrie

L.K.KANDIE
Nakuru

Kwa Utaratibu

S
A

Bwa na Bwa na u tu hu ru mi e Bwa na Bwa na Bwa na

T
B

Detailed description: This block contains the first system of the musical score, measures 1 through 7. It features two vocal staves: Soprano (S) and Alto (A) on the top staff, and Tenor (T) and Bass (B) on the bottom staff. The music is in 3/8 time with a key signature of one sharp (F#). The lyrics are: "Bwa na Bwa na u tu hu ru mi e Bwa na Bwa na Bwa na".

8

u tu hu ru mi e Kri ... stu Kri stu Kri stu Kri stu Kri stu

Kri stu

Detailed description: This block contains the second system of the musical score, measures 8 through 15. It features two vocal staves: Soprano (S) and Alto (A) on the top staff, and Tenor (T) and Bass (B) on the bottom staff. The music is in 3/8 time with a key signature of one sharp (F#). The lyrics are: "u tu hu ru mi e Kri ... stu Kri stu Kri stu Kri stu Kri stu". A "Kri stu" lyric is also present below the bass staff in measure 15.

16

1.

Kri stu u tu hu ru mi e e

Detailed description: This block contains the third system of the musical score, measures 16 through 19. It features two vocal staves: Soprano (S) and Alto (A) on the top staff, and Tenor (T) and Bass (B) on the bottom staff. The music is in 3/8 time with a key signature of one sharp (F#). The lyrics are: "Kri stu u tu hu ru mi e e". A first ending bracket labeled "1." spans measures 18 and 19.

Misa Ya Mt Yohane Mwinjilisti

Gloria

L.K.KANDIE
Nakuru

$\text{♩} = 76$

S
A

O - R - G - A - N P - R - E L - U - D - E

T
B

5

U tu ku fukwa Mu ngu juu mbi ngu ni na a ma ni du ni a ni kwa
du ni a ni

na a ma ni du ni a ni kwa

10

wa tu a li o wa ri dhi a kwa wa tu a li o wa ri dhi

kwa wa tu

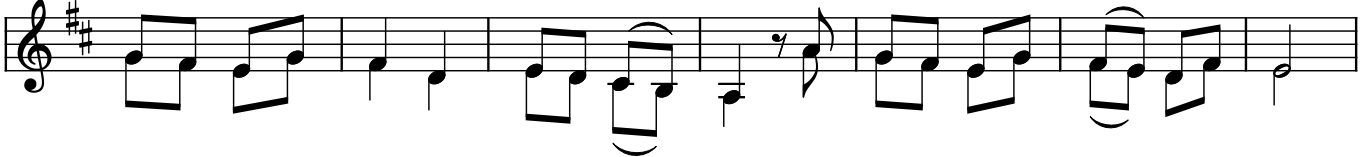
17

a

18

tu na ku si fu tu na ku he shi mu tu na ku a bu du tu na ku tu ku za

26



tu na ku shu ku ru kwa a ji li ya u tu ku fu wa ko m ku

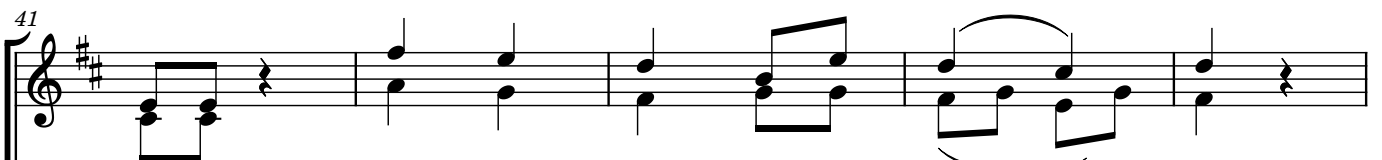
33



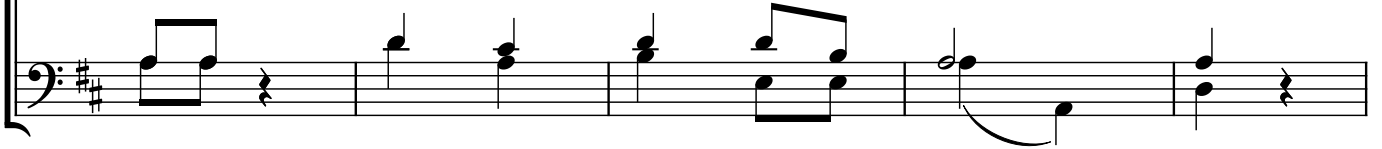
u O - R - G - A - N Ee Bwa na Mu ngu mfal me wa mbi



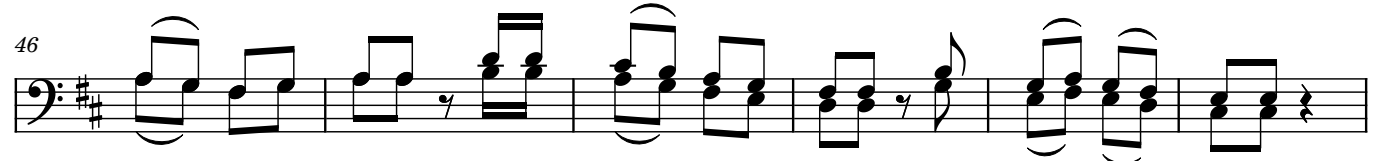
41



ngu ni Mu ngu Ba ba mwe nye zi



46

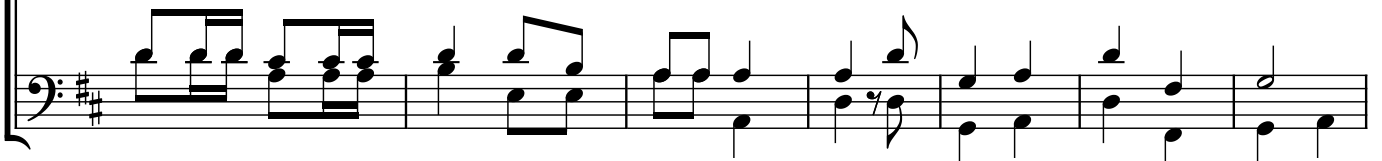


ee Bwa na Ye su Kristo mwa na pe ke e ee Bwa na Mu ngu

52



Mwa na ko ndo o wa Mu ngu mwa na wa Ba ba O - R - G - A - N



59

mwe nye ku o ndo a dha mbi za u li mwe ngu u li mwe ngu

za

66

u tu hu ru mi e po

mwe nye ku o ndo a dha mbi za u li mwe ngu

73

ke a ombile tu mwe nye ku ke ti ku u me ku u me kwa Ba ba u

81

tu hu ru mi e u tu hu ru mi e O - R - G - A - N

92

u li ye u li ye pe ke ya ko pe ke
kwa ku wa ndi we u li ye pe ke ya ko M ta ka ti fu

98

ya ko Bwa na pa ke ya ko u .. li ye juu u li ye ju u ju u juu ka
ju u ju u

104

1. bi sa sa pa mo ja
u li ye Ye su Kri sto pa mo ja na Ro ho

112

na...Ro ho ka ti ka u tu ku fu ka ti ka u tu ku fu u tu ku fu wa Mu ngu

119 $\text{♩} = 60$

u tu ku fu wa Mu ngu Ba ba A MI NA

Misa Ya Mt Yohane Mwinjilisti

Aleluya

L.K.KANDIE
Nakuru

S
A

A le lu ya a le lu ya a le lu ya ale lu ya a ...

T
B

a le

Detailed description: This block contains the first system of the musical score. It features two staves: a Soprano (S) staff and a Tenor/Bass (T/B) staff. The key signature is one sharp (F#) and the time signature is 3/8. The Soprano part begins with a treble clef and a key signature of one sharp. The lyrics 'A le lu ya a le lu ya a le lu ya ale lu ya a ...' are written below the notes. The Tenor/Bass part begins with a bass clef and a key signature of one sharp. The lyrics 'a le' are written below the notes. The music consists of eighth and sixteenth notes, with some rests and a final fermata.

9

... a le lu ya ya

1.

Fine

Detailed description: This block contains the second system of the musical score, starting at measure 9. It features two staves: a Soprano (S) staff and a Tenor/Bass (T/B) staff. The key signature is one sharp (F#) and the time signature is 3/8. The Soprano part begins with a treble clef and a key signature of one sharp. The lyrics '... a le lu ya ya' are written below the notes. The Tenor/Bass part begins with a bass clef and a key signature of one sharp. The lyrics '... a le lu ya ya' are written below the notes. The music consists of eighth and sixteenth notes, with some rests and a final fermata. A first ending bracket labeled '1.' spans the final two measures of the system, which end with a double bar line and the word 'Fine'.

Misa Ya Mt Yohane Mwinjilisti

Sanctus

L.K.KANDIE
Nakuru

$\text{♩} = 78$

S
A

M ta ka ti fu Mta ka ti fu M ta ka ti fu Bwa na Mu ngu

T
B

M ta ka ti fu

Detailed description: This block contains the first system of music for the Sanctus. It features two vocal parts: Soprano/Alto (S/A) and Tenor/Bass (T/B). The music is in 2/4 time with a tempo of 78 beats per minute. The key signature has two sharps (F# and C#). The lyrics are: 'M ta ka ti fu Mta ka ti fu M ta ka ti fu Bwa na Mu ngu' for the S/A part and 'M ta ka ti fu' for the T/B part. The notation includes various rhythmic values such as eighth and sixteenth notes, and rests.

5

Bwa na Mu ngu wa ma je shi M ta ka ti fu Mta ka ti fu M ta ka ti fu

M ta ka ti fu

Detailed description: This block contains the second system of music, starting at measure 5. The lyrics for the S/A part are: 'Bwa na Mu ngu wa ma je shi M ta ka ti fu Mta ka ti fu M ta ka ti fu'. The T/B part continues with 'M ta ka ti fu'. The musical notation follows the same style as the first system.

10

Bwa na Mu ngu Bwa na Mu ngu wa ma je shi

Detailed description: This block contains the third system of music, starting at measure 9. The lyrics for the S/A part are: 'Bwa na Mu ngu Bwa na Mu ngu wa ma je shi'. The T/B part continues with the same rhythmic accompaniment. The musical notation follows the same style as the previous systems.

13

mbi ngu na du ni a zi me ja a u tu ku fu wa ko

Detailed description: This block contains the fourth system of music, starting at measure 13. The lyrics for the S/A part are: 'mbi ngu na du ni a zi me ja a u tu ku fu wa ko'. The T/B part continues with the same rhythmic accompaniment. The musical notation follows the same style as the previous systems.

17

mbi ngu na du ni a zi me ja a u tu ku fu wa ko ho sa na

ja a ho sa na ho sa na

23

ho sa na ho sa na aa ah ho sa na ho sa na ju

ho sa na ho sa na aa ah juu

28

u mbi ngu ni

29

M ba ri ki wa a ja ye kwa ji na la Bwa na kwa ji na la Bwa na ...

35

... ... kwa ji na la Bwa na

Misa Ya Mt Yohane Mwinjilisti

Mysterium Fidelium

L.K.KANDIE
Nakuru

$\text{♩} = 70$

S
A

Ee Bwa na tuna ta nga za ki fo cha ko na ku tu ku za

T
B

7

u fu fu ko wa ko mpa ka u ta ka po u ta ka po ku ja

Misa Ya Mt Yohane Mwinjilisti

Amina

L.K.KANDIE
Nakuru

S
A

A mi na a mi na a ... mi na a mi na a ...

T
B

a

Detailed description: This block contains the musical notation for the Soprano (S) and Alto (A) parts of the 'Amina' section. The music is written in treble clef with a key signature of one sharp (F#) and a 3/8 time signature. The lyrics are 'A mi na a mi na a ... mi na a mi na a ...'. The Soprano part features a melodic line with various note values and rests, while the Alto part provides harmonic support with chords and moving lines. A fermata is placed over the final 'mi na a ...' in both parts.

9

.... a mi na na

1.

Fine

Detailed description: This block contains the musical notation for the Tenor (T) and Bass (B) parts of the 'Amina' section. The music is written in bass clef with a key signature of one sharp (F#) and a 3/8 time signature. The lyrics are '.... a mi na na'. The Tenor part has a melodic line with a fermata over the final 'na'. The Bass part provides harmonic support with chords and moving lines. A first ending bracket labeled '1.' spans the final two measures, which end with a double bar line and the word 'Fine'.

Misa Ya Mtakatifu Yohane Mwinjilisti

Signum Pacis

L.K.KANDIE

Nakuru

S
A

T
B

ha ya ha ya ndu gu ya ngu tu ta ki a ne

1. Tu ta ki a ne A ma ni
2. Tu ta ki a ne U pe ndo
3. Tu ta ki a ne Fu ra ha
4. Tu ta ki a ne Fa ra ja

6

ha ya ha ya ndu gu ya ngu tu ta ki a ne

- tu ta ki a ne A ma ni
- tu ta ki a ne U pe ndo
- tu ta ki a ne Fu ra ha
- tu ta ki a ne Fa ra ja

11

Bwa na we tu Ye su Mwa na wa Mu ngu

- ni A ma ni ya ke
- ni U pe ndo wa ke
- ni Fu ra ha ya ke
- ni Fa ra ja ya ke

- ni A ma ni ya
- ni U pe ndo wa
- ni Fu ra ha ya
- ni Fa ra ja ya

2

16 Fine

Bwa na we tu Ye su Mwa na wa Mu ngu

ke
ke
ke
ke

Misa Ya Mt Yohane Mwinjilisti

Agnus Dei

L.K.KANDIE
Nakuru

Kwa Utaratibu

S
A
T
B

Ee Mwa na kondo o wa Mungu Ee Mwa na kondo o wa Mungu u

6
o ndo a ye dha mbi za u li mwe ngu u tu hu ru mi e Ee e Ee

14
Mwa na kondo o wa Mungu Ee Mwa na kondo o wa Mungu u o ndo a ye

19
dha mbi za u li mwe ngu u tu ja ... li e A ma ni

Fine

A